


RESEARCH AGENDA



Intensive care medicine research agenda on invasive fungal infection in critically ill patients

Matteo Bassetti^{1,16*} , Jose Garnacho-Montero², Thierry Calandra³, Bartjan Kullberg⁴, George Dimopoulos⁵, Elie Azoulay⁶, Arunaloake Chakrabarti⁷, Daniel Kett⁸, Cristobal Leon⁹, Luis Ostrosky-Zeichner¹⁰, Maurizio Sanguinetti¹¹, Jean-Francois Timsit¹², Malcom D. Richardson¹³, Andrew Shorr¹⁴ and Oliver A. Cornely¹⁵

© 2017 Springer-Verlag Berlin Heidelberg and ESICM

Abstract

Purpose: To describe concisely the current standards of care, major recent advances, common beliefs that have been contradicted by recent trials, areas of uncertainty, and clinical studies that need to be performed over the next decade and their expected outcomes with regard to *Candida* and *Aspergillus* infections in non-neutropenic patients in the ICU setting.

Methods: A systematic review of the medical literature taking account of national and international guidelines and expert opinion.

Results: Severe invasive fungal infections (IFIs) are becoming increasingly frequent in critically ill patients. Approximately 80% of IFIs are due to *Candida* spp. and 0.3–19% to *Aspergillus* spp. Recent observations emphasize the necessity of building a worldwide sentinel network to monitor the emergence of new fungal species and changes in susceptibility. Robust data on the attributable mortality are essential for the design of clinical studies with mortality endpoints. Although early antifungal therapy for *Candida* has been recommended in patients with risk factors, sepsis of unknown cause, and positive *Candida* serum biomarkers [β -1 \rightarrow 3-D-glucan (BDG) and *Candida albicans* germ tube antibody (CAGTA)], its usefulness and influence on outcome need to be confirmed. Future studies may specifically address the optimal diagnostic and therapeutic strategies for patients with abdominal candidiasis. Better knowledge of the pharmacokinetics of antifungal molecules and tissue penetration is a key issue for intensivists. Regarding invasive aspergillosis, further investigation is needed to determine its incidence in the ICU, its relationship with influenza outbreaks, the clinical impact of rapid diagnosis, and the significance of combination treatment.

Conclusions: Fundamental questions regarding IFI have to be addressed over the next decade. The clinical studies described in this research agenda should provide a template and set priorities for the clinical investigations that need to be performed.

Keywords: *Candida*, *Aspergillus*, Antifungals, Echinocandins, Fluconazole, Beta-D-glucan

Introduction

Invasive fungal infections (IFI) in critically ill patients are associated with considerable morbidity and mortality.

This research agenda on IFI focuses on the more frequent diseases, namely invasive candidiasis and invasive aspergillosis in non-neutropenic patients, but not on the so-called ultra-orphan fungal infections that may be as rare as less than 1 in 1 million population, e.g., mucormycosis or trichosporonosis [1]. This article aims to highlight open questions and gaps in our knowledge and

*Correspondence: mattba@tin.it; matteo.bassetti@asuiud.sanita.fvg.it

¹ Infectious Diseases Clinic, Santa Maria Misericordia Hospital, University of Udine, Udine, Italy

Full author information is available at the end of the article

understanding of epidemiology, risk factors, use of diagnostic tools, and antifungal compounds.

The critically ill patients treated today are a very heterogeneous group. This is why the authors of this article represent microbiology, intensive care, and clinical infectious disease experts with views from Asia, Europe, and North America.

It was a major step forward that an international consensus was established on the definitions of what constitutes invasive fungal disease [2]. A common set of definitions allows comparison of results between studies to a certain extent, but even the definitions continue to evolve [3].

Treatment delays in critically ill patients negatively impact on outcomes. Invasive fungal infections are no exceptions to this rule. Thus the field moves towards earlier diagnosis followed by earlier treatment. The early strategic option obviously is prophylaxis, which has been proven successful in other clinical settings [4]. To avoid overtreatment in a large group of critically ill patients, any prophylactic approach needs a population at sufficiently high risk, but currently it is unclear how to select such appropriate target groups.

Whether superiority of a certain treatment or strategy can be proven at all may depend on the clinical endpoint chosen. While echinocandins appear superior to azoles in terms of treatment success [5], it is much more challenging to improve survival rates by applying a single diagnostic tool or treatment decision. The diverse and complex problems that the individual critically ill patient at risk for IFI may face could easily mean several “competing” life-threatening conditions at the same time. Thus, single interventions proven to save lives in a randomized comparison are rare findings.

In critically ill patients we do not expect the next advance to come from a single pivotal drug trial, but rather from strategic trials integrating genetics profile of host and pathogen, diagnostic tools, antifungal treatment, and therapeutic drug monitoring (TDM). Nothing less than individualized treatment may advance the field. Unfortunately, no such clinical trial has succeeded yet.

Methods

A systematic review for this project was conducted with a timeline from 2006 through 2016. Two authors of each of the two sections (*Candida* and *Aspergillus*) searched PubMed using the terms *Candida*, *Aspergillus*, antifungal therapy, and critically ill patients. Searches were completed in February 2017. One author (MB) also manually screened reference lists of articles selected for inclusion to identify additional studies. The selection of articles and topics for inclusion in this research agenda from the systematic review were based on their likely importance

for yielding clinically important practice changes over the next decade as determined by the writing committee.

What is the current standard of care for delivering the best possible critical care in the field?

Invasive candidiasis

Invasive fungal infections (IFIs) are an increasingly frequent cause of severe infections with between 30% and 40% of IFIs episodes occurring in critically ill patients [6]. Approximately 80% of IFIs are due to *Candida* species. In a worldwide ICU prevalence study, *Candida* was the third most frequently isolated microorganism accounting for 17% of all infections [7, 8]. The rank order of *Candida* in bloodstream infections varies by country and is influenced by the type of patients studied. *Candida* is number three or four in mostly ICU-based US studies and number six to ten in population-based European studies [9]. The incidence of candidemia is age-related with higher frequencies at both ends of the spectrum. Globally, invasive candidiasis ranges from 1 to 10 per 1000 ICU admissions. While it is responsible for no more than 5% of the total number of sepsis or septic shock, candidemia is associated with sepsis or septic shock in 10–40% of cases [10].

Conventional culture-based microbiological tests are suboptimal for the diagnosis of candidemia and deep-seated candidiasis. Blood cultures are insensitive and take several days to obtain *Candida* species and antifungal susceptibilities [11]. Although fluorescence in situ hybridization with peptide nucleic acid probes (PNA-FISH) allows the detection of yeasts within 30–90 min of blood culture positivity, the commercially available test (PNA-FISH Yeast Traffic Light assay) does not distinguish between *C. albicans* and *C. parapsilosis* or *C. glabrata* and *C. krusei*.

Various studies have shown that delays in initiating adequate antifungal therapy are associated with increased mortality [12, 13], therefore driving the field to explore advanced strategies such as prophylaxis, marker-based pre-emptive therapy, and risk-based empirical therapy. Numerous risk factors for invasive *Candida* infections have been identified, including higher Acute Physiology and Chronic Health Evaluation II scores, diabetes mellitus, renal insufficiency, surgery (especially abdominal surgery), pancreatitis, the use of broad-spectrum antibiotics, parenteral nutrition, hemodialysis, mechanical ventilation, the presence of central vascular catheters, and therapy with immunosuppressive agents [9]. The development of invasive *Candida* infections is often preceded by extensive colonization of the skin or of the mucus membranes of the gastrointestinal and urogenital tracts, and the degree of colonization, assessed using the colonization index, has been shown to be an

independent risk factor for development of candidiasis [9]. Fluconazole and caspofungin decrease the incidence of invasive candidiasis when given prophylactically in selected patients [14, 15]. Biomarker-guided pre-emptive therapy with echinocandins triggered by elevated serum β -1 \rightarrow 3-D-glucan (BDG) has also been shown to reduce the incidence of proven disease and to target antifungals for patients that would be most likely to benefit from them [15]. While fluconazole has not been shown to be effective for empirical therapy [16], a recent study has shown that empirical therapy with micafungin in high-risk hosts also decreased the incidence of proven disease [17]. None of these studies have shown a survival benefit as none of them have been powered to do so; however, the standard of care at this time is utilizing a clinical prediction rule such as the *Candida* score [18] or the MSG-01 rule [15] to identify high-risk hosts and then monitor serum biomarkers such as BDG or PCR for biomarker-based pre-emptive therapy or the clinical prediction rules themselves as triggers for empirical therapy. A recent study has also shown that the negative predictive value of BDG can be used to stop empirical therapy as part of an antifungal stewardship intervention [19].

Polyenes, azoles, and echinocandins are the antifungal drug classes available for the treatment of invasive candidiasis (Table 1). All new antifungal drugs have been compared to a standard regimen in one or more randomized trials. In the 1990s, fluconazole became the standard treatment regimen for invasive candidiasis, as it was shown to be as effective as conventional amphotericin B deoxycholate (dAmB), but associated with significantly lower toxicity [20]. Since those trials, dAmB is no longer considered a treatment option for invasive candidiasis [21]. Also voriconazole and caspofungin were shown to be as effective as dAmB but less toxic [22, 23]. Subsequently, in two randomized trials, micafungin was shown to be as effective as caspofungin and as liposomal amphotericin B (LAmB) [24, 25].

Despite the limited but significant advent of *Candida* strains with reduced susceptibility to fluconazole (especially *C. glabrata*), the drug has remained the mainstay of anti-*Candida* treatment for more than two decades.

Invasive aspergillosis

The incidence of invasive pulmonary aspergillosis (IPA) in the ICU is unclear, ranging from 0.3% to 19% because of the difficulties of diagnosis (diagnostic tests vary in their sensitivity and specificity) and related to biopsy or autopsy difficulties in the ICU setting (coagulation abnormalities, difficult oxygenation, next of kin consent for autopsy, etc.) [26]. The “classical” risk factors for IPA are classified in high, intermediate, and low risk categories (Table 2). New risk factors, however, have been

Table 1 Data on different antifungal treatment in randomized controlled studies

Study drug	Comparator drug	Number of patients, total (candidemia/localized)	Patients in ICU (%)	Standardized success rate ^a	Mortality	References
Fluconazole 400 mg/day	Amphotericin B 0.5–0.6 mg/kg/day	206 (206/0)	Unknown	Fluconazole 70%, amphotericin B 79%, $P = 0.22$	Fluconazole 40%, amphotericin B 33%, $P = 0.20$	[20]
Caspofungin 50 mg/day	Amphotericin B C 0.6–0.7 mg/kg/day	224 (181/43)	Unknown	Caspofungin 73%, amphotericin B 62%, $P = 0.09$	Caspofungin 34%, amphotericin B 30%, $P = 0.23$	[23]
Voriconazole 3 mg/kg b.i.d.	Amphotericin B 0.7–1.0 mg/kg/day followed by fluconazole 400 mg/day	370 (370/0)	49	Voriconazole 65%, amphotericin B \rightarrow fluconazole 71%, $P = 0.25$	Voriconazole 36%, amphotericin B \rightarrow fluconazole 24%, $P = 0.23$	[22]
Anidulafungin 100 mg/day	Fluconazole 400 mg/day	245 (219/26)	Unknown	Anidulafungin 76%, fluconazole 60%, $P = 0.01$	Anidulafungin 23%, fluconazole 31%, $P = 0.13$	[5]
Micafungin 100 mg/day	Liposomal amphotericin B 3 mg/kg/day	392 (333/59)	56	Micafungin 74%, L-AmB 70%, $P = 0.27$	Micafungin 40%, L-AmB 40%, $P = 0.94$	[24]
Micafungin 100 or 150 mg/day	Caspofungin 50 mg/day	576 (492/84)	Unknown	Micafungin 100 mg/day, 76%, micafungin 150 mg/day 71%, caspofungin 72%, $P = 0.36$	Micafungin 100 mg/day 29%, micafungin 150 mg/day 33%, caspofungin 26%, $P = 0.19$	[25]
Isavuconazole 200 mg/day	Caspofungin 50 mg/day	400 (333/67)	Unknown	Isavuconazole 60%, caspofungin 71%	Isavuconazole 15%, caspofungin 12%, $P = n.s.$	[80]

^a Standardized success rate (modified) intent to treat population; end of iv therapy, or at last available study visit

identified during the last decade including COPD, liver failure, cirrhosis, and post-H1N1 influenza [27, 28]. The diversity of patients and risk factors complicates diagnostic and therapeutic procedures while the available data in critically ill patients are extremely limited.

What have been the major recent advances in the field?

Invasive candidiasis

Geographical and environmental factors, the patient's age, and exposure to antimicrobial agents impact on the distribution of *Candida* species isolated from patients with invasive candidiasis (IC). Historically, *C. albicans* was responsible for about two-thirds of IC, but non-*albicans Candida* species (i.e., *C. glabrata*, *C. krusei*, *C. tropicalis*, and *C. parapsilosis*) now account for about half of all cases of IC in hospital [10]. The proportion of IC due to *C. glabrata* has increased in Western countries (i.e., Europe and North America) and tends to be higher in older patients [9, 10]. *C. parapsilosis* is more predominant in Southern Europe, Southeast Asia, and Latin America [10]. The occurrence of infections caused by *C. krusei* or by *C. glabrata* had been linked to previous exposure to antifungal agents, especially azoles. *C. dubliniensis*, *C. guilliermondii*, *C. kefyr*, and *C. lusitanae* species are a less frequent cause of IC [9]. *C. auris* is an emerging, multidrug-resistant yeast causing invasive healthcare-associated infections [29].

Table 2 Risk factors for IPA in ICU patients

1. High risk
Neutropenia (500/mm ³)
Hematological malignancy
Allogeneic HSCT
2. Intermediate risk
Prolonged treatment with corticosteroids before admission to the ICU
Autologous HSCT
COPD
Liver cirrhosis
Solid organ cancer
HIV infection
Lung transplantation
Systemic immunosuppressive therapy
3. Low risk
Severe burns
Solid organ transplant
Steroid treatment for >7 days
Prolonged stay in the ICU (>21 days)
Malnutrition
Post cardiac surgery
Near drowning

COPD chronic obstructive pulmonary disease, HIV human immunodeficiency virus, HSCT hematopoietic stem cell transplantation, ICU intensive care unit, IPA invasive pulmonary aspergillosis

Matrix-assisted laser desorption ionization–time of flight mass spectrometry (MALDI-TOF MS) has overcome several of the shortcomings of conventional microbiology for the detection and identification of yeasts [30–32]. Turnaround times are 10–15 min after the growth of a fungal colony or a positive blood culture, and diagnostic accuracy is over 95%. Additional work is required to make MALDI-TOF MS suitable for the detection of antifungal resistance [33].

Over the last few decades, non-culture-based diagnostic methods have been developed to detect fungal metabolites, cell wall antigens (mannan and BDG), nucleic acids, and antibodies directed against fungal products in blood and other body fluids. A meta-analysis showed that the detection of mannan antigen and anti-mannan antibodies had low sensitivities (around 60%) but high specificities (90–95%) for the diagnosis of IC [34]. Combining antigen and antibody assays increased the sensitivity to 83% but not the specificity. Sensitivities are higher for infections caused by *C. albicans* than by other *Candida* species. Commercially available BDG assays had sensitivities of 73–75% and specificities of 97% for the diagnosis of probable or proven *Candida* infections [35].

Up to two-thirds of adult ICU patients receive empirical systemic antifungal treatment (ESAT) [21, 36]. Although early ESAT has been recommended in patients with risk factors for invasive candidiasis (IC), sepsis of unknown cause, and positive *Candida* serum biomarkers BDG and *Candida albicans* germ tube antibody (CAGTA) [37], its usefulness and influence on outcome need to be confirmed.

In the challenging scenario of early diagnosis of IC, recent studies have demonstrated the diagnostic value of BDG and CAGTA [19, 38–42]. Although the use of BDG measurement in daily practice for establishing the indication or the withdrawal of ESAT should be defined, recent observational studies [41, 42] showed that negativity of the BDG assay may be used as a strategy to discontinue ESAT because of the high sensitivity and negative predictive value of the test. Until new proteomic (MALDI-TOF) or genomic (PCR) techniques could be extrapolated to IC for improving its diagnosis, a therapeutic algorithm based on stratification of the clinical condition, *Candida* score, and results of *Candida* serum biomarkers may be useful to improve the management of ICU patients at high risk of invasive fungal infection (Fig. 1).

In a pivotal randomized trial, anidulafungin was compared to fluconazole for the treatment of candidemia and invasive candidiasis in non-neutropenic patients [5]. In that study, the overall response was significantly better with anidulafungin (76%) than with fluconazole (60%; $P < 0.01$). The inferior outcomes with fluconazole were retained in post hoc multivariate analyses,

Systemic antifungal therapy in ICU patients: an approach based in clinical stratification, *Candida* scores and *Candida* biomarkers

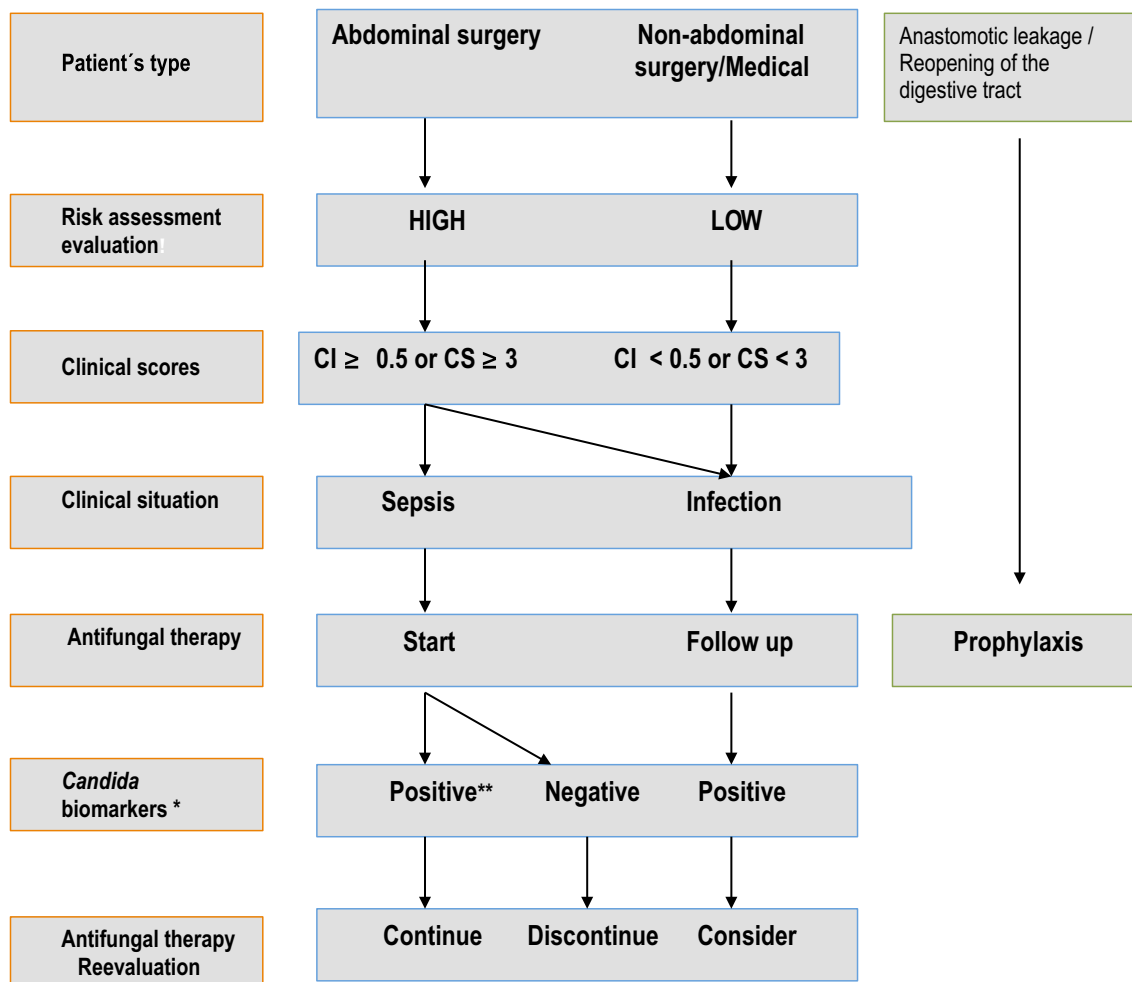


Fig. 1 Systemic antifungal therapy in ICU patients: an approach based on clinical stratification, *Candida* scores and *Candida* biomarkers. *CI* Colonization index (range, 0–1) indicates the number of positive sites colonized with *Candida* divided by the number of sites sampled, *CS* *Candida* score (range, 0–5) items are surgical admission (1 point), severe sepsis (2 points), multiple sites positive with *Candida* species (1 point), and parenteral nutrition (1 point), * *Candida* biomarkers: (1→3)- β -D-glucan (β BDG) and *Candida albicans* germ tube antibody (CAGTA), ** Positive: β BDG \geq cutoff in two consecutive samples or β BDG and CAGTA \geq cutoff in one determination

and the difference was consistent over a broad range of APACHE II scores [43]. Interestingly, while the infecting *C. albicans* strains were uniformly susceptible to fluconazole, the inferiority of fluconazole was most prominent in patients infected by *C. albicans* (success rate, fluconazole 62% vs. anidulafungin 81%; $P < 0.02$) [5]. In addition, while the trial was not powered for mortality differences, the mortality in the fluconazole group tended to be higher than in the anidulafungin group (31% vs. 23%; $P = 0.13$).

On the other hand, the influence of severe pathophysiological changes that are present in the critically ill patient may also cause pharmacokinetic (PK) alterations of the

different antifungals [44, 45]. Recent studies showed that echinocandins exposure in ICU patients was low compared with healthy volunteers and other (non-)critically ill patients, most likely as a result of a larger volume of distribution, suggesting that a weight-based dose regimen should probably be more suitable for patients with substantially altered drug distribution [45–47].

Invasive aspergillosis

Early diagnosis of IPA is a challenge based on the integration of microbiological, radiological, and clinical data. The laboratory diagnosis is based on galactomannan

(GM) detection in bronchoalveolar lavage (BAL) specimens (GM cutoff 0.5–1.0) and not in serum (BAL GM sensitivity 66.7%, serum GM sensitivity 53.3%). There is a limited role for BDG testing alone, although the combination with GM or PCR improves specific detection [48]. The *Aspergillus* lateral flow device (LFD) assay in serum and BAL samples—a rapid test for the detection of *Aspergillus*—is not yet commercially available, whilst the SeptiFast assay method in blood samples is associated with a sensitivity of 66%, specificity 98%, PPV 93%, and NPV 88% [49]. CT scanning of the lungs is associated with greater than 90% specificity and poor sensitivity (30–40%). In critically ill COPD patients multiple nodules distributed along with bronchovascular bundles are common, whilst a deteriorating chest X-ray combined with laboratory tests could support the diagnosis of probable IPA. The clinical signs and symptoms are non-specific. Because of all these diagnostic uncertainties and difficulties, an algorithm by AspICU investigators has been suggested in order to facilitate the diagnosis of probable IPA in the ICU setting (Table 3) [50].

What are the common beliefs that have been contradicted by recent trials and what are remaining areas of uncertainty?

Invasive candidiasis

IC is associated with an overall crude mortality of 40–60%, which is strongly affected by the underlying

conditions and by the presence of sepsis or septic shock [10]. Assessing the attributable mortality of IC is difficult, with studies estimating ranges from 5% to 70% [51]. However, it is most likely in the range of 10–15% [9]. Species-specific survival analyses have yielded ambiguous results in large patient cohorts.

Although use of preemptive therapy is gaining interest, more studies are needed to better define which patients may benefit from this approach and whether more widespread use of antifungal agents may negatively influence fungal ecology. A recent double-blind placebo-controlled trial has also contradicted the widespread belief that critically ill patients with ICU-acquired sepsis, *Candida* colonization, and multiple organ failure should receive antifungal therapy. In this clinical trial, empirical treatment with micafungin, compared with placebo, did not increase fungal infection-free survival at day 28 (primary endpoint). However, this trial was not powered to detect changes in mortality [17].

Despite some studies showing the superiority of echinocandins over fluconazole, a propensity score-derived analysis of a population-based, multicenter prospective cohort has demonstrated that, in patients with candidemia, therapy with fluconazole did not show a significant association with mortality either in the empirical or targeted therapy [52]. These results were similar among patients with severe sepsis and septic shock. In patients with septic shock attributable to *Candida* spp., after

Table 3 A clinical algorithm to diagnose IPA in critically ill patients

1. <i>Aspergillus</i> (+) LRT specimen culture (entry criterion)
2. Compatible signs and symptoms (one of the following)
Fever refractory to at least 3 days of appropriate antibiotic therapy
Recrudescent fever after a period of defervescence of at least 48 h while still on antibiotics and without other apparent cause
Pleuritic chest pain
Pleuritic rub
Dyspnea
Hemoptysis
Worsening respiratory insufficiency in spite of appropriate antibiotic therapy and ventilatory support
3. Abnormal medical imaging by portable chest X-ray or CT scan of the lungs
4. Either
4a. Host risk factors (one of the following conditions)
Neutropenia (absolute neutrophil count less than 500/mm ³) preceding or at the time of ICU admission
Underlying hematological or oncological malignancy treated with cytotoxic agents
Glucocorticoid treatment (prednisone or equivalent, >20 mg/day)
Congenital or acquired immunodeficiency
OR
4b. Semiquantitative <i>Aspergillus</i> -positive
Culture of BAL fluid (+ or ++) without bacterial growth together with a positive cytological smear showing branching hyphae
a) Probable invasive pulmonary aspergillosis when 1 + 2 + 3 + either 4a or 4b
b) When ≥ 1 criterion is not met, the case is classified as <i>Aspergillus</i> colonization

adjustment for severity of illness and source control, therapy with echinocandins was not associated with a higher survival rate [53]. Two other recent observational studies have confirmed that antifungal choice (fluconazole vs. echinocandin/liposomal-amphotericin B) does not influence mortality in *C. glabrata* bloodstream infection [53, 54]. More data are needed in this area.

Pathophysiological changes associated with critical illness can change drug concentrations so that they are significantly different from those observed in non-critically ill patients. In these circumstances, if standard dosing is used, then suboptimal concentrations (either too low or unnecessarily high) may result, putting the patient at risk of clinical failure or drug toxicity. Antifungal agents tend not to be as markedly affected by altered PK in critical illness. The drugs are mostly lipophilic, hepatically metabolized, and with high protein binding. Drugs such as fluconazole are an exception to these characteristics. Use of renal replacement therapy (RRT) can influence the clearance of some antifungal drugs, particularly those that are predominantly eliminated by renal mechanisms, are not highly protein bound, and have low molecular weights, notably the azoles and 5-flucytosine. Moreover, different RRT characteristics, including the specific mode, membrane characteristics, flow rates, and duration of treatment, may influence the effects of RRT on drug PK and should be taken into consideration when evaluating dosing [6, 9].

Source control, i.e., catheter removal during candidemia or abscess drainage in invasive candidiasis, has proven an independent predictor of reduced mortality in multiple studies [12, 55]. The optimal total duration of therapy for candidemia and invasive candidiasis has not been studied. However, step-down from echinocandins to intravenous or oral azoles appears to be feasible, once the patient has been stabilized, and provided that the isolate is azole-susceptible. While most trials allowed step-down to azoles after at least 10 days of echinocandin therapy, a recent non-comparative trial applied a step-down to an oral azole as early as 5 days after start of iv treatment [56]. In a prospective cohort study of ICU patients, neither discontinuation of empirical antifungal therapy nor de-escalation to fluconazole after 5 days in the case of documented invasive candidiasis was associated with a survival difference [57]. Although these studies were not randomized to compare early step-down therapy to prolonged echinocandins, the efficacy and survival results in patients with early step-down were similar.

Invasive aspergillosis

For the treatment of IPA voriconazole and isavuconazole are recommended, whilst LAmB or AmB lipid complex

is recommended for species with intrinsic high azole minimum inhibitory concentrations (MICs). Voriconazole is recommended for IPA due to *A. fumigatus* if the isolate is voriconazole-susceptible (susceptible if MIC ≤ 1 mg/L) whilst in the case of resistance (MIC > 2 mg/L) LAmB therapy is preferred. Where the voriconazole MIC equals 2 mg/L (intermediate) the response to voriconazole monotherapy is unknown [58]. A growing problem in IPA treatment is the intrinsic resistance to polyenes and azoles or the acquired resistance to azoles during azole therapy mainly in patients with chronic pulmonary aspergillosis (CPA) [59]. TDM is used to avoid treatment failure, resistance, or toxicity. The optimal plasma trough levels (with HPLC/MS) are 1–4 mg/L for itraconazole, 2–6 mg/L for voriconazole, and greater than 1 mg/L for posaconazole suspension [60–62]. The newer tablet or intravenous formulation of posaconazole is more likely to achieve target plasma levels but there is limited evidence for routine TDM. Data supporting routine TDM for isavuconazole are also limited, although from phase II/III clinical studies trough levels of 2–3 mg/L are suggested.

The use of combination antifungal therapy for IA is debated, although theoretically this can achieve (a) potential synergistic effects, (b) broader antifungal spectrum, and (c) potentially a reduction of acquired resistance [63]. In vitro and animal studies demonstrated synergistic or additive effects of a mold-active triazole (itraconazole, voriconazole, or posaconazole) or amphotericin B with an echinocandin but few human studies support this practice. The combination of voriconazole with anidulafungin failed to demonstrate an overall significant difference over voriconazole alone in primary outcome in IPA cases, although in a post hoc subgroup analysis among galactomannan-positive patients a significant advantage favoring combination treatment was recorded [64]. The use of combination therapy is considered as therapeutic solution (a) in cases of resistance (e.g., Cyp51a mutations), (b) in central nervous system aspergillosis due to azole-resistant *Aspergillus* (favoring flucytosine), (c) as broad initial coverage pending pathogen identification, (d) for salvage therapy in refractory disease [65]. In regions with environmental resistance rates of at least 10%, a voriconazole–echinocandin combination could be used as initial therapy [66]. The duration of IPA treatment ranges between 3 and 50 weeks. Physicians should consider iv to oral switch in stable patients and, before treatment discontinuation, is essential the closed monitoring with imaging and microbiological evaluation.

Chronic pulmonary aspergillosis (CPA) is a rare disease in non-immunocompromised patients with prior or current lung disease including tuberculosis, chronic cavitary pulmonary aspergillosis (CCPA), chronic fibrosing pulmonary aspergillosis (CFPA), *Aspergillus* nodules

and single aspergilloma, which in moderately immunocompromised patients present as subacute invasive pulmonary aspergillosis (formerly called chronic necrotising pulmonary aspergillosis) leading to a more rapidly progressive infection (<3 months) which should be managed as invasive aspergillosis.

The diagnosis of CPA requires the combination of thoracic imaging findings, direct evidence of *Aspergillus* infection (microscopy or culture from biopsy) or immunological response to *Aspergillus* spp., and exclusion of alternative diagnoses, all present for at least 3 months. Long-term oral antifungal therapy is recommended, whilst surgical excision of simple aspergilloma is suggested if technically possible. Hemoptysis may be controlled with tranexamic acid and bronchial artery embolization [67].

What are remaining areas of uncertainty?

Invasive candidiasis

Given the ubiquitous presence of glucan in the environment, false-positive BDG results have been noted in a number of conditions frequently encountered in critically ill patients such as severe mucositis, bacterial sepsis, hemodialysis, treatment with antibiotics, albumin, or immunoglobulins, and transfusion of human blood products. BDG was superior to the *Candida* score or the colonization index for the diagnosis of intra-abdominal candidiasis or candidemia in high-risk surgical and ICU patients [68, 69]. However, undetectable serum BDG does not rule out an early IFI when the clinical suspicion is high [70].

The detection of fungal DNA by PCR is a technical challenge because of a low DNA yield after cell lysis and the risk of false positivity due to contamination by fungal saprophytes. A broad range of in-house PCR methods have been developed but there still is no commercially available PCR assay. In a systematic review and meta-analysis, PCR tended to be positive at an earlier time point than conventional microbiology with pooled sensitivity and specificity of PCR for candidemia of 95% and 92%, respectively [71]. In a recent study, plasma or serum PCR was more sensitive than BDG in patients with IC or deep-seated candidiasis (80% versus 56% and 88% versus 62%, respectively) but not in those with candidemia [72]. Sensitivities reached 98% when blood culture was combined with PCR. A whole blood assay combining PCR technology and nanoparticle-based hybridization (T2 magnetic resonance) was recently shown to rapidly (<5 h), accurately, and reproducibly detect 1–3 CFU of *C. albicans*, *C. tropicalis*, *C. glabrata*, *C. krusei*, and *C. parapsilosis* per milliliter of spiked blood or in patients with a low incidence of IC [73]. Lately, a PCR/electrospray ionization–mass spectrometry (PCR/

ESI) technology was developed to detect more than 800 bloodstream infection-relevant bacterial and *Candida* species within 6 h of sample acquisition. Findings from the RADICAL study showed 81% sensitivity, 69% specificity, and 97% negative predictive value with PCR/ESI when compared with conventional cultures [74]. In a set of prospectively collected blood samples in sepsis patients, PCR/ESI and standard microbiology were concordant in 86% of culture-positive samples [75]. Of note, the PCR/ESI assay is not capable of determining antimicrobial resistance phenotypes, and the inclusive detection of resistance-associated genotypes is, to date, limited to only few broad-spectrum antibiotic resistance markers.

Many questions about the proper management of fungal infections still exist without definitive answers. The absence of definite diagnostic criteria in patients with suspicion of non-candidemic invasive candidiasis makes it clearly difficult to determine the efficacy of different therapeutic approaches. In fact, the negative results of ESAT in the recent clinical trial can be explained by the fact that many of these patients did not truly have an invasive candidiasis despite the fact that all had sepsis, multiple organ failure, and multifocal *Candida* colonization [17].

Although several diagnostic algorithms based on the combination of clinical scores and microbiological tests have been proposed, this approach did not discriminate infected from non-infected patients. New diagnostic tools with higher sensitivity and specificity are clearly needed. For the rapid diagnosis of *Candida* bloodstream infections, technologies such as MALDI-TOF allow the direct identification of bacteria from positive blood cultures whereas yeasts are poorly identified using this technique [76, 77]. New technologies (i.e., fluorescence in situ hybridization) [78] capable of identifying *Candida* spp. in blood cultures within a few hours are highly attractive, but clinical studies are needed to establish the clinical benefits of these diagnostic tools and how to introduce them into the diagnostic work-up. T2 diagnostic technology is an exciting development in the field, but more real-world experience is needed [73, 79].

Recent studies have also cast doubt about the optimal dosing of antifungals in critically ill patients, especially in more severe condition [80]. There are also emerging data linking suboptimal dosing to the emergence of antifungal resistance and a poor outcome. Dosing of antifungal agents in patients with extracorporeal devices needs more studies to define the therapeutic schemes that avoid subtherapeutic levels. In this sense, the impact on outcome of TDM warrants further investigations.

Despite the publication of the randomized trial suggesting the superiority of anidulafungin compared to fluconazole [5], physicians have continued to prescribe

fluconazole with candidemia or invasive candidiasis, supported by some of the guidelines. Many physicians have long favored fluconazole over the new echinocandins, driven by the vast clinical experience with fluconazole, its favorable pharmacokinetics and tissue penetration, and its low price compared to echinocandins.

Recently, a second, large randomized trial comparing azoles to echinocandins as initial therapy for candidemia or invasive candidiasis demonstrated a similar difference. In that study, the success rate in the isavuconazole group was 60.3% vs. 71.1% in the caspofungin group [81]. A pooled analysis was performed of patient-level data from seven randomized antifungal treatment trials, using 30-day mortality as the primary endpoint [55]. In this analysis, randomization to an echinocandin was associated with significantly greater clinical success and better survival than treatment with amphotericin B or azoles. The advantage of echinocandin therapy over azoles was demonstrated in patients with low and moderately high APACHE II scores, suggesting that the survival benefit from echinocandin treatment is not limited to severely ill patients [55]. Multiple cohort studies have identified treatment with an echinocandin to be independently associated with better survival in multivariate analyses, e.g., in severely ill patients with candidemia and septic shock [82], and in patients infected by *C. glabrata* [83].

Despite the lack of randomized trials, antifungal therapy for patients with severe community-acquired or healthcare-associated intra-abdominal infection is recommended if *Candida* is grown from cultures [9, 84].

As patients with candidemia are easier to recognize and to enroll in clinical trials than patients with deep-seated candidiasis, trial results and guidelines have mainly focused on patients with candidemia [9]. Specific studies will need to identify the optimal diagnosis and treatment of deep-seated abdominal candidiasis.

In a large clinical study, ICU patients with polymorphisms in their TLR/interferon- α host defense pathway were more likely to develop candidemia than underlying disease-matched ICU controls [85]. A genome-wide analysis has identified several additional immune polymorphisms that render patients up to 19 times more likely to acquire candidemia than other ICU patients [86]. These findings may lead to screening strategies to identify patients at risk and requiring antifungal prophylaxis, early empiric therapy, or adjunctive immunotherapy when undergoing surgery or ICU admission [87].

Invasive aspergillosis

The survival of patients with IPA has increased in recent years owing to advances in diagnosis and the release of newer antifungal drugs, but the overall outcome still remains suboptimal (attributable mortality is considered

42–64%) especially in certain populations (e.g., allogeneic HSCT) or in cases of extrapulmonary involvement [63]. According to Taccone et al., the mortality predictors for critically ill with IPA include age, SOFA score, mechanical ventilation, and renal replacement therapy at diagnosis [26, 88].

What do the international group of experts recommend as the top 10 studies/trials to be done in the next 10 years and what are expected outcomes/results of these trials?

Invasive candidiasis

Recent observations emphasize the necessity to build a worldwide sentinel network to collect epidemiological data in real time in order to monitor the emergence of new fungal species causing IC and changes in susceptibility of the most common isolates. Obtaining robust data on the attributable mortality of IC is critical for the design of clinical studies with mortality endpoints.

Despite enormous progress made in mycological diagnostics, molecular methods relying on culture amplification remain inadequate to fill the temporal gaps between the release of a laboratory result and the identity of causative fungal pathogens and susceptibility patterns. Upcoming molecular methods applied directly to clinical specimens may greatly accelerate diagnosis and significantly impact on early therapy of IFIs. Trade-offs in terms of increased sensitivity include the risk of false-positive results due to environmental fungal DNA contamination. Yet, fully automated molecular tests may help reduce the risk of contamination, workload, and error rates and thus offer the promise of short turnaround time which is essential for early diagnosis and prompt initiation of appropriate therapy for IFIs.

As the discussion has highlighted, the recent years have seen the development of various new biomarkers for the diagnosis and management of candidemia and invasive candidiasis, along with a better appreciation and validation of various clinical stratification tools. Hence, we suggest three potential studies that should help to elucidate our understanding of these severe infections. First, it remains unclear how the use of biomarkers can be differentially integrated into pre-emptive therapy strategies. A randomized controlled trial linking change in biomarkers and a clinical risk score as part of a pre-emptive treatment strategy as compared to standard therapy would provide substantial insight. Second, with expanding utilization of procalcitonin (PCT) to guide anti-infective treatment initiation and duration, there remains a paucity of knowledge about if and how this test can be applied in cases of either suspected or confirmed candidemia or invasive candidiasis. Simple observational studies to appreciate the natural history of changes in PCT in candidemia are necessary as are studies to define the sensitivity and

Table 4 Top 10 studies/trials to be done in the next 10 years

Studies/trials	Expected outcome/results
1. Worldwide sentinel network to collect epidemiological data in real time	Monitor emergence of new fungal species and changes in susceptibility of the most common isolates
2. A randomized controlled trial linking change in biomarkers and a clinical risk score as part of a pre-emptive treatment strategy as compared to standard therapy	Provide substantial insight to better define pre-emptive strategy
3. Utilization of PCT to guide treatment initiation and duration	Provide knowledge about if and how this test can be applied in cases of either suspected or confirmed candidemia or invasive candidiasis
4. Specific study on the treatment of abdominal candidiasis (drug, dose, duration)	Better knowledge about optimal management
5. Study on PK/PD and TDM of antifungal molecules in critically ill patients	Better knowledge about tissue penetration of echinocandins, optimal dosing schedule for echinocandins, when and how to do TDM
6. Identification of immunogenetics-based risk profiles for identifying patients at highest risk for invasive candidiasis	Personalized antifungal prophylaxis or treatment
7. Phase 3 Studies on new antifungals (CD101, SCY078, and APX001)	These new options may contribute to optimal management and lower mortality rates among patients with candidemia or invasive candidiasis
8. The clinical impact of the <i>Aspergillus</i> LFD and SeptiFast assay in the rapid diagnosis of invasive aspergillosis	Easier and more rapid diagnosis of invasive aspergillosis
9. The significance of combination treatment patients' outcome and impact of PK/PD profile of combined antifungal molecules	Better knowledge about combination therapy in patients with invasive aspergillosis
10. Study on incidence of extrapulmonary manifestation of aspergillosis	Better knowledge about the epidemiology and the management of mediastinitis after cardiac surgery and pericarditis/endocarditis

specificity of this test for non-bacterial processes. Third, with the advent of new biomarkers and expanding data to explain the value and limitations of older ones, we suggest a randomized controlled study employing multiple biomarkers and changes in them to guide initiation and duration of therapy. We envision moving to a scenario much akin to venous thromboembolism, where a risk score stratifies pretest probability formally and then biomarkers with high sensitivity are measured and followed by an assessment of biomarkers with enhanced specificity—so as to decrease the number of patients unnecessarily exposed to antifungal therapy.

For the management of patients with invasive candidiasis, future studies may specifically address the optimal diagnostic and therapeutic strategies for patients with deep-seated abdominal candidiasis or *Candida* peritonitis. These patients are currently often underdiagnosed; while it is assumed that echinocandins constitute the optimal treatment regimen, specific studies on treatment of abdominal candidiasis are lacking. Second, better knowledge of PK of antifungal molecules and tissue penetration is a key issue for intensivists. The optimal dosing schedule for echinocandins in ICU patients is not known. Given the inter-individual variability observed in ICU patients, the role of TDM should be studied further. Third, identification of immunogenetics-based risk profiles may identify patients at highest risk for invasive candidiasis, leading to personalized antifungal prophylaxis or treatment. Finally, new antifungal drugs are currently under development.

At least three compounds are under development: a long-acting echinocandin (CD101, Cidara) and two entirely new antifungal classes (SCY078, Scynexis, and APX001, Amplyx) will enter phase 2/3 candidemia/invasive candidiasis trials shortly. These new drugs and new personalized antifungal strategies may contribute to optimal management and lower mortality rates among patients with candidemia or invasive candidiasis.

Invasive aspergillosis

During the last decade significant progress regarding epidemiology, diagnosis, and treatment of IPA has been recorded. However, further investigation is needed for topics including (a) the incidence of IPA in the ICU, (b) the relationship between IPA and influenza outbreaks, (c) the clinical impact of the *Aspergillus* LFD and SeptiFast assay in the rapid diagnosis, (d) the significance of combination treatment (patients' outcome, impact of PK/PD profile of combined antifungal molecules), and (e) the extrapulmonary manifestation of aspergillosis (mediastinitis after cardiac surgery, pericarditis/endocarditis).

Conclusions

As a result of epidemiologic changes, the continuing evolution of pathogens and new patient groups at risk, infectious diseases scientists and physicians can never be fully satisfied with the tools at hand. However, during recent years, the scientific community made significant progress in epidemiology, diagnosis, and treatment of IFI. This is

an excellent foundation on which to build the next steps of improvement. Further investigation aims to reduce the still high morbidity and mortality of IFI, and to raise awareness of IFI among clinicians.

Combining clinical and microbiological expertise, we recommend the following array of research topics for the agenda of the immediate decade (Table 4).

A worldwide sentinel network needs to collect data on emerging pathogens, changing susceptibility patterns, and IFI-attributable mortality in real time. Studies on accelerated diagnosis would allow earlier targeted treatment and should emphasize molecular characterization of cultured pathogens and ideally the direct application of molecular methods to clinical specimens. The randomized comparison of experimental treatment strategy integrating clinical stratification and old and new biomarkers with current treatment standard would provide valuable strategic insights. At the same time studies on biomarkers should guide clinical decision-making on the fundamental issues of when to start and when to stop antifungal treatment. A less well-studied clinical issue is the various forms of deep-organ IFI, ranging from bone and joint to intra-abdominal infection. In critically ill patients, studies on antifungal PK, tissue penetration, and optimal dosing schedules would elucidate the role of TDM. Finally, studies on immunogenetic risk profiles could eventually lead to personalized antifungal strategies.

Researching the above topics will advance our knowledge of IFI and will allow decisive development against fungal morbidity and mortality in critically ill patients. Current industrial drug development plans may address some of the agenda items, but the vast majority goes beyond the interest and capability of the pharmaceutical industry and requires action of public funding bodies.

Abbreviations

BDG: β -1 \rightarrow 3-D-glucan; CAGTA: *Candida albicans* germ tube antibody; CCPA: Chronic cavitary pulmonary aspergillosis; CFPA: Chronic fibrosing pulmonary aspergillosis; CPA: Chronic pulmonary aspergillosis; ESAT: Empirical systemic antifungal treatment; GM: Galactomannan; HSCT: Halogenic stem cell transplant; IC: Invasive candidiasis; IFI: Invasive fungal infections; IPA: Invasive pulmonary aspergillosis; LAmb: Liposomal amphotericin B; LFD: Lateral flow device; MALDI-TOF MS: Matrix-assisted laser desorption ionization–time of flight mass spectrometry; PCT: Procalcitonin; TDM: Therapeutic drug monitoring.

Author details

¹ Infectious Diseases Clinic, Santa Maria Misericordia Hospital, University of Udine, Udine, Italy. ² Unidad Clínica de Cuidados Intensivos, Hospital Universitario Virgen Macarena and Institute of Biomedicine of Seville, IBI/CSIC/University of Seville, seville, Spain. ³ Infectious Diseases Service, Department of Medicine, Centre Hospitalier Universitaire Vaudois, University of Lausanne, Lausanne, Switzerland. ⁴ Department of Medicine and Radboud Center for Infectious Diseases, Radboud University Medical Center, Nijmegen, Netherlands. ⁵ Department of Critical Care, University Hospital ATTIKON, National and Kapodistrian University of Athens, Athens, Greece. ⁶ Medical Intensive Care Unit, Hôpital Saint-Louis, ECSTRA Team, Biostatistics

and Clinical Epidemiology, Paris Diderot Sorbonne University, Paris, France.

⁷ Department of Medical Microbiology, Postgraduate Institute of Medical Education and Research, Chandigarh, India. ⁸ Division of Pulmonary and Critical Care Medicine, The Leonard M. Miller School of Medicine at the University of Miami, Miami, FL, USA. ⁹ Intensive Care Unit, Hospital Universitario de Valme, Universidad de Sevilla, Seville, Spain. ¹⁰ Division of Infectious Diseases, McGovern Medical School, UTHealth, Houston, USA. ¹¹ Institute of Microbiology, Università Cattolica del Sacro Cuore, Rome, Italy. ¹² UMR1137-IAMETeam 5, Decision Sciences in Infectious Disease Prevention, Control and Care, Paris Diderot University-Inserm, Sorbonne Paris Cité and 2AP-HP, Medical and Infectious Diseases ICU, Bichat Hospital, Paris, France. ¹³ Division of Infection, Immunity and Respiratory Medicine, Faculty of Biology, Medicine and Health, Manchester Academic Health Science Centre, The University of Manchester, Manchester, UK. ¹⁴ Pulmonary and Critical Care Medicine, Medstar Washington Hospital Center, Washington, USA. ¹⁵ Cologne Excellence Cluster on Cellular Stress Responses in Aging-Associated Diseases (CECAD), Clinical Trials Centre Cologne (ZKS Köln), Department I of Internal Medicine, German Centre for Infection Research (DZIF), University of Cologne, Cologne, Germany. ¹⁶ Clinica Malattie Infettive, Azienda Sanitaria Universitaria Integrata, Presidio Ospedaliero Santa Maria della Misericordia, Piazzale S. Maria della Misericordia, n. 15, 33100 Udine, Italy.

Compliance with ethical standards

Conflicts of interests

No non-financial conflicts of interest exist for any of the authors.

Financial interest

MB serves on scientific advisory boards for Basilea, Gilead, Pfizer, Merck, and Astellas and has received funding for travel or speaker honoraria from Basilea, Gilead, Pfizer, Merck, and Astellas Pharma. LO has received research grants and/or speaking or consulting fees from Merck, Astellas, Pfizer, Scynexis, Cidara, Gilead, Meiji, and T2 biosystems. AS has served as a speaker for, consultant to, or received research support from Achaogen, Actavis, Astellas, AZ, Bayer, Cempra, Cidara, Entasysis, MedCo, Melinta, Merck, Paratek, Roche, Spero, Tetrphase, Theravance, and Wockhordt. JFT serves on scientific advisory boards for Merck and Gilead and has received speaker honoraria and/or research grants from Merck, Astellas, and Pfizer. The other authors declare no conflict of interest.

Received: 11 January 2017 Accepted: 16 February 2017

Published online: 02 March 2017

References

1. Cornely OA, Arikian-Akdagli S, Dannaoui E, Groll AH, Lagrou K, Chakrabarti A, Lanternier F, Pagano L, Skiada A, Akova M et al (2014) ESCMID and ECMM joint clinical guidelines for the diagnosis and management of mucormycosis 2013. *Clin Microbiol Infect* 20(Suppl 3):5–26
2. Asciglu S, Rex JH, de Pauw B, Bennett JE, Bille J, Crockaert F, Denning DW, Donnelly JP, Edwards JE, Erjavec Z et al (2002) Defining opportunistic invasive fungal infections in immunocompromised patients with cancer and hematopoietic stem cell transplants: an international consensus. *Clin Infect Dis* 34(1):7–14
3. de Pauw B, Walsh TJ, Donnelly JP, Stevens DA, Edwards JE, Calandra T, Pappas PG, Maertens J, Lortholary O, Kauffman CA et al (2008) Revised definitions of invasive fungal disease from the European Organization for Research and Treatment of Cancer/Invasive Fungal Infections Cooperative Group and the National Institute of Allergy and Infectious Diseases Mycoses Study Group (EORTC/MSG) Consensus Group. *Clin Infect Dis* 46(12):1813–1821
4. Cornely OA, Maertens J, Winston DJ, Perfect J, Ullmann AJ, Walsh TJ, Helfgott D, Holowiecki J, Stockelberg D, Goh YT et al (2007) Posaconazole vs. fluconazole or itraconazole prophylaxis in patients with neutropenia. *N Engl J Med* 356(4):348–359
5. Reboli AC, Rotstein C, Pappas PG, Chapman SW, Kett DH, Kumar D, Betts R, Wible M, Goldstein BP, Schranz J et al (2007) Anidulafungin versus fluconazole for invasive candidiasis. *N Engl J Med* 356(24):2472–2482
6. Delaloye J, Calandra T (2014) Invasive candidiasis as a cause of sepsis in the critically ill patient. *Virulence* 5(1):161–169

7. Vincent J-L, Rello J, Marshall J, Silva E, Anzueto A, Martin CD et al (2009) International study of the prevalence and outcomes of infection in intensive care units. *JAMA* 302(21):2323–2329
8. Kett DH, Azoulay E, Echeverria PM, Vincent J-L, Extended Prevalence of Infection in ICU Study (EPIC II) Group of Investigators (2011) *Candida* bloodstream infections in intensive care units: analysis of the extended prevalence of infection in intensive care unit study. *Crit Care Med* 39(4):665–670
9. Kullberg BJ, Arendrup MC (2015) Invasive candidiasis. *N Engl J Med* 373(15):1445–1456
10. Guery BP, Arendrup MC, Auzinger G, Azoulay E, Borges Sá M, Johnson EM et al (2009) Management of invasive candidiasis and candidemia in adult non-neutropenic intensive care unit patients: part I. Epidemiology and diagnosis. *Intensive Care Med* 35(1):55–62
11. Clancy CJ, Nguyen MH (2013) Finding the “missing 50%” of invasive candidiasis: how nonculture diagnostics will improve understanding of disease spectrum and transform patient care. *Clin Infect Dis* 56(9):1284–1292
12. Bassetti M, Righi E, Ansaldi F, Merelli M, Trucchi C, De Pascale G, Diaz-Martin A, Luzzati R, Rosin C, Lagunes L, Trecarichi EM, Sanguinetti M, Posteraro B, Garnacho-Montero J, Sartor A, Rello J, Rocca GD, Antonelli M, Tumbarello M (2014) A multicenter study of septic shock due to candidemia: outcomes and predictors of mortality. *Intensive Care Med* 40:839–845
13. Garey KW, Rege M, Pai MP, Mingo DE, Suda KJ, Turpin RS, Bearden DT (2006) Time to initiation of fluconazole therapy impacts mortality in patients with candidemia: a multi-institutional study. *Clin Infect Dis* 43:25–31
14. Shorr AF, Chung K, Jackson WL, Waterman PE, Kollef MH (2005) Fluconazole prophylaxis in critically ill surgical patients: a meta-analysis. *Crit Care Med* 33:1928–1935
15. Ostrosky-Zeichner L, Shoham S, Vazquez J, Reboli A, Betts R, Barron MA, Schuster M, Judson MA, Revankar SG, Caeiro JP, Mangino JE, Mushatt D, Bedimo R, Freifeld A, Nguyen MH, Kauffman CA, Dismukes WE, Westfall AO, Deerman JB, Wood C, Sobel JD, Pappas PG (2014) MSG-01: a randomized, double-blind, placebo-controlled trial of caspofungin prophylaxis followed by preemptive therapy for invasive candidiasis in high-risk adults in the critical care setting. *Clin Infect Dis* 58:1219–1226
16. Schuster MG, Edwards JE Jr, Sobel JD, Darouiche RO, Karchmer AW, Hadley S, Slotman G, Panzer H, Biswas P, Rex JH (2008) Empirical fluconazole versus placebo for intensive care unit patients: a randomized trial. *Ann Intern Med* 149:83–90
17. Timsit JF, Azoulay E, Schwebel C, Charles PE, Cornet M, Souweine B, Klouche K, Jaber S, Trouillet JL, Bruneel F, Argaud L, Cousson J, Meziani F, Gruson D, Paris A, Darmon M, Garrouste-Orgeas M, Navellou JC, Fouchier A, Allaouchiche B, Das V, Gangneux JP, Ruckly S, Maubon D, Jullien V, Wolff M, EMPIRICUS Trial Group (2016) Empirical micafungin treatment and survival without invasive fungal infection in adults with icu-acquired sepsis, *Candida* colonization, and multiple organ failure: the EMPIRICUS randomized clinical trial. *JAMA* 316:1555–1564
18. León C, Ruiz-Santana S, Saavedra P, Almirante B, Nolla-Salas J, Alvarez-Lerma F, Garnacho-Montero J, León MA, EPCAN Study Group (2006) A bedside scoring system (“*Candida* score”) for early antifungal treatment in nonneutropenic critically ill patients with *Candida* colonization. *Crit Care Med* 34:730–737
19. Nucci M, Nouér SA, Esteves P, Guimarães T, Breda G, de Miranda BG, Queiroz-Telles F, Colombo AL (2016) Discontinuation of empirical antifungal therapy in ICU patients using 1,3- β -D-glucan. *J Antimicrob Chemother* 71:2628–2633
20. Rex JH, Bennett JE, Sugar AM, Pappas PG, van der Horst CM, Edwards JE, Washburn RG, Scheld WM, Karchmer AW, Dine AP et al (1994) A randomized trial comparing fluconazole with amphotericin B for the treatment of candidemia in patients without neutropenia. Candidemia Study Group and the National Institute. *N Engl J Med* 331:1325–1330
21. León C, Ostrosky-Zeichner L, Schuster M (2014) What’s new in the clinical and diagnostic management of invasive candidiasis in critically ill patients. *Intensive Care Med* 40:808–819
22. Kullberg BJ, Sobel JD, Ruhnke M, Pappas PG, Viscoli C, Rex JH, Cleary JD, Rubinstein E, Church LW, Brown JM, Schlamm HT, Oborska IT, Hilton F, Hodges MR (2005) Voriconazole versus a regimen of amphotericin B followed by fluconazole for candidaemia in non-neutropenic patients: a randomised non-inferiority trial. *Lancet* 366:1435–1442
23. Mora-Duarte J, Betts R, Rotstein C, Colombo AL, Thompson-Moya L, Smietana J, Lupinacci R, Sable C, Kartsonis N, Perfect J, Caspofungin Invasive Candidiasis Study Group (2002) Comparison of caspofungin and amphotericin B for invasive candidiasis. *N Engl J Med* 347(25):2020–2029
24. Kuse ER, Chetchotisakd P, Da Cunha CA, Ruhnke M, Barrios C, Raghunadharao D, Sekhon JS, Freire A, Ramasubramanian V, Demeyer I, Nucci M, Leelarasamee A, Jacobs F, Decruyenaere J, Pittet D, Ullmann AJ, Ostrosky-Zeichner L, Lortholary O, Koblinger S, Diekmann-Berndt H, Cornely OA, Micafungin Invasive Candidiasis Working Group (2007) Micafungin versus liposomal amphotericin B for candidaemia and invasive candidosis: a phase III randomised double-blind trial. *Lancet* 369:1519–1527
25. Pappas PG, Rotstein CM, Betts RF, Nucci M, Talwar D, De Waele JJ, Vazquez JA, Dupont BF, Horn DL, Ostrosky-Zeichner L, Reboli AC, Suh B, Digumarti R, Wu C, Kovanda LL, Arnold LJ, Buell DN (2007) Micafungin versus caspofungin for treatment of candidemia and other forms of invasive candidiasis. *Clin Infect Dis* 45:883–893
26. Taccone FS, Van den Abeele AM, Bulpa P, Misset B, Meersseman W, Cardoso T, Paiva JA, Blasco-Navalpotro M, De Laere E, Dimopoulos G, Rello J, Vogelaers D, Blot SI, AsplCU Study Investigators (2015) Epidemiology of invasive aspergillosis in critically ill patients: clinical presentation, underlying conditions, and outcomes. *Crit Care* 12(19):7
27. Garnacho-Montero J, Olaechea P, Alvarez-Lerma F, Alvarez-Rocha L, Blanquer J, Galván B, Rodríguez A, Zaragoza R, Aguado JM, Mensa J, Solé A, Barberán J (2013) Epidemiology, diagnosis and treatment of fungal respiratory infections in the critically ill patient. *Rev Esp Quimioter Jun* 26(2):173–188
28. Chun-Yu L, Wei-Lun L, Che-Chia C, Hou-Tai C, Han-Chung H, Kuo-chin K, Ning-Hung C, Ying-Jen C, Cheng-Ta Y, Chung-Chi H, Dimopoulos G (2017) Invasive fungal tracheobronchitis in mechanically ventilated critically ill patients: underlying conditions, diagnosis and outcomes. *Ann Intensive Care* 7:9.doi:10.1186/s13613-016-0230-9
29. Lockhart SR, Etienne KA, Vallabhaneni S, Farooqi J, Chowdhary A, Govender NP et al (2017) Simultaneous emergence of multidrug-resistant *Candida auris* on 3 continents confirmed by whole-genome sequencing and epidemiological analyses. *Clin Infect Dis* 64(2):134–140
30. Marklein G, Josten M, Klanke U, Muller E, Horre R, Maier T et al (2009) Matrix-assisted laser desorption/ionization-time of flight mass spectrometry for fast and reliable identification of clinical yeast isolates. *J Clin Microbiol* 47(9):2912–2917
31. Spanu T, Posteraro B, Fiori B, D’Inzeo T, Campoli S, Ruggeri A et al (2012) Direct maldi-tof mass spectrometry assay of blood culture broths for rapid identification of *Candida* species causing bloodstream infections: an observational study in two large microbiology laboratories. *J Clin Microbiol* 50(1):176–179
32. Ling H, Yuan Z, Shen J, Wang Z, Xu Y (2014) Accuracy of matrix-assisted laser desorption/ionization-time of flight mass spectrometry for identification of clinical pathogenic fungi: a meta-analysis. *J Clin Microbiol* 52(7):2573–2582
33. Vella A, De Carolis E, Vaccaro L, Posteraro P, Perlin DS, Kostrzewa M et al (2013) Rapid antifungal susceptibility testing by matrix-assisted laser desorption/ionization-time of flight mass spectrometry analysis. *J Clin Microbiol* 51(9):2964–2969
34. Mikulska M, Calandra T, Sanguinetti M, Poulain D, Viscoli C (2012) The use of mannan antigen and anti-mannan antibodies in the diagnosis of invasive candidiasis: recommendations from the Third European Conference on Infections in Leukemia. *Crit Care* 14(6):R222
35. Lamoth F, Cruciani M, Mengoli C, Castagnola E, Lortholary O, Richardson M et al (2012) Beta-Glucan antigenemia assay for the diagnosis of invasive fungal infections in patients with hematological malignancies: a systematic review and meta-analysis of cohort studies from the Third European Conference on Infections in Leukemia (ECIL-3). *Clin Infect Dis* 54(5):633–643
36. Azoulay E, Dupont H, Tabah A, Lortholary O, Stahl JP, Francais A et al (2012) Systemic antifungal therapy in critically ill patients without invasive fungal infection. *Crit Care Med* 40:813–822
37. Pappas PG, Kauffman CA, Andes DR, Clancy CJ, Marr KA, Ostrosky-Zeichner L, Reboli AC, Schuster M, Vazquez JA, Walsh TJ, Zaoutis TE, Sobel JD (2016) Clinical practice guideline for the management of candidiasis:

- 2016 update by the Infectious Diseases Society of America. *Clin Infect Dis* 62:e1–e50
38. Hanson KE, Pfeiffer CD, Lease ED, Balch AH, Zaas AK, Perfect JR et al (2012) (1,3)- β -D-Glucan surveillance with preemptive anidulafungin for invasive candidiasis in intensive care unit patients: a randomized pilot study. *PLoS One* 7:e42282
 39. León C, Ruiz-Santana S, Saavedra P, Castro C, Ubeda A, Loza A et al (2012) Value of (1 \rightarrow 3) β -D-glucan and *Candida albicans* germ tube antibody for discriminating between *Candida* colonization and invasive candidiasis in patients with severe abdominal conditions. *Intensive Care Med* 38:1315–1325
 40. Martín-Mazuelos E, Loza A, Castro C, Macías D, Zakariya I, Saavedra P et al (2015) β -D-glucan and *Candida albicans* germ tube antibody in ICU patients with invasive candidiasis. *Intensive Care Med* 41:1424–1432
 41. Prattes J, Hoenigl M, Rabensteiner J, Raggam RB, Pruellner F, Zollner-Schwetz I, Valentini T, Hönigl K, Fruhwald S, Krause R (2014) Serum 1,3-beta-D-glucan for antifungal treatment stratification at the intensive care unit and the influence of surgery. *Mycoses* 57:679–686
 42. Posteraro B, Tumbarello M, De Pascale G, Liberto E, Vallecocchia MS, De Carolis E, Di Gravio V, Treccarichi EM, Sanguinetti M, Antonelli M (2016) (1,3)- β -D-glucan-based antifungal treatment in critically ill adults at high risk of candidaemia: an observational study. *J Antimicrob Chemother* 71:2262–2269
 43. Reboli AC, Shorr AF, Rotstein C, Pappas PG, Kett DH, Schlamm HT, Reisman AL, Biswas P, Walsh TJ (2011) Anidulafungin compared with fluconazole for treatment of candidemia and other forms of invasive candidiasis caused by *Candida albicans*: a multivariate analysis of factors associated with improved outcome. *BMC Infect Dis* 11:261
 44. Yang Q, Wang T, Xie J, Wang Y, Zheng X, Chen L et al (2016) Pharmacokinetic/pharmacodynamic adequacy of echinocandins against *Candida* spp. in intensive care unit patients and general patient populations. *Int J Antimicrob Agents* 47:397–402
 45. Jullien V, Azoulay E, Schwebel C, Le Saux T, Charles PE, Cornet M et al (2017) Population pharmacokinetics of micafungin in ICU patients with sepsis and mechanical ventilation. *J Antimicrob Chemother* 72(1):181–189
 46. Brüggemann RJ, Middel-Baars V, de Lange DW, Colbers A, Girbes AR, Pickers P, Swart EL (2017) Pharmacokinetics of anidulafungin in critically ill patients in the intensive care unit with suspected or proven invasive fungal infections. *Antimicrob Agents Chemother*. doi:10.1128/AAC.01894-16
 47. van der Elst KC, Veringa A, Zijlstra JG, Beishuizen A, Klont R, Brummeluis-Visser P, Uges DR, Touw DJ, Kosterink JG, van der Werf TS, Alffenaar JC (2016) Low caspofungin exposure in patients in the intensive care unit. *Antimicrob Agents Chemother*. doi:10.1128/AAC.01582-16
 48. Schroeder M, Simon M, Katchanov J, Wijaya C, Rohde H, Christner M, Laqmani A, Wichmann D, Fuhrmann V, Kluge S (2016) Does galactomannan testing increase diagnostic accuracy for IPA in the ICU? A prospective observational study. *Crit Care* 20:139
 49. Steinmann J, Buer J, Rath PM (2016) Detection of *Aspergillus fumigatus* in blood samples from critically ill patients in intensive care units by use of the SeptiFast assay. *J Clin Microbiol* 54:1918
 50. Blot S, Taccone F, Van den Abeele A, Bulpa P, Meersseman W, Brusselsaers N, Dimopoulos G, Paiva JA, Misset B, Rello J, Vandewoude K, Vogelaers D, AsPICU Study Investigators (2012) A clinical algorithm to diagnose invasive pulmonary aspergillosis in ICU patients. *Am J Respir Crit Care Med* 186(1):56–64
 51. Falagas ME, Apostolou KE, Pappas VD (2006) Attributable mortality of candidemia: a systematic review of matched cohort and case-control studies. *Eur J Clin Microbiol Infect Dis* 25(7):419–425
 52. López-Cortés LE, Almirante B, Cuenca-Estrella M, Garnacho-Montero J, Padilla B, Puig-Asensio M, Ruiz-Camps I, Rodríguez-Baño J, members of the CANDIPOP Project from GEIH-GEMICOMED (SEIMC) and REIPI (2016) Empirical and targeted therapy of candidemia with fluconazole versus echinocandins: a propensity score-derived analysis of a population-based, multicentre prospective cohort. *Clin Microbiol Infect* 22:733
 53. Eschenauer GA, Carver PL, Lin SW, Klinker KP, Chen YC, Potoski BA, Shields RK, Clancy CJ, Nguyen MH, Lam SW (2013) Fluconazole versus an echinocandin for *Candida glabrata* fungaemia: a retrospective cohort study. *J Antimicrob Chemother* 68:922–926
 54. Puig-Asensio M, Fernández-Ruiz M, Aguado JM, Merino P, Lora-Pablos D, Guinea J, Martín-Dávila P, Cuenca-Estrella M, Almirante B (2016) Propensity score analysis of the role of initial antifungal therapy in the outcome of *Candida glabrata* bloodstream infections. *Antimicrob Agents Chemother* 60:3291–3300
 55. Andes DR, Safdar N, Baddley JW, Playford G, Reboli AC, Rex JH, Sobel JD, Pappas PG, Kullberg BJ, Mycoses Study Group (2012) Impact of treatment strategy on outcomes in patients with candidemia and other forms of invasive candidiasis: a patient-level quantitative review of randomized trials. *Clin Infect Dis* 54:1110–1122
 56. Vazquez J, Reboli AC, Pappas PG, Patterson TF, Reinhardt J, Chin-Hong P, Tobin E, Kett DH, Biswas P, Swanson R (2014) Evaluation of an early step-down strategy from intravenous anidulafungin to oral azole therapy for the treatment of candidemia and other forms of invasive candidiasis: results from an open-label trial. *BMC Infect Dis* 14:97
 57. Bailly S, Leroy O, Montravers P, Constantin JM, Dupont H, Guillemot D, Lortholary O, Mira JP, Perrigault PF, Gangneux JP, Azoulay E, Timsit JF (2015) Antifungal de-escalation was not associated with adverse outcome in critically ill patients treated for invasive candidiasis: post hoc analyses of the AmarCAND2 study data. *Intensive Care Med* 41(11):1931–1940
 58. Seyedmousavi S, Melchers WJ, Mouton JW, Verweij PE (2013) Pharmacodynamics and dose-response relationships of liposomal amphotericin B against different azole-resistant *Aspergillus fumigatus* isolates in a murine model of disseminated aspergillosis. *Antimicrob Agents Chemother* 57:1866–1871
 59. Verweij PE, Chowdhary A, Melchers WJ, Meis JF (2016) Azole resistance in *Aspergillus fumigatus*: can we retain the clinical use of mold-active antifungal azoles? *Clin Infect Dis* 62:362–368
 60. Lestner JM, Roberts SA, Moore CB, Howard SJ, Denning DW, Hope WW (2009) Toxicodynamics of itraconazole: implications for therapeutic drug monitoring. *Clin Infect Dis* 49:928–930
 61. Dolton MJ, Ray JE, Chen SCA, Ng K, Pont LG, McLachlan AJ (2012) Multicenter study of voriconazole pharmacokinetics and therapeutic drug monitoring. *Antimicrob Agents Chemother* 56:4793–4799
 62. Walsh TJ, Raad I, Patterson TF et al (2007) Treatment of invasive aspergillosis with posaconazole in patients who are refractory to or intolerant of conventional therapy: an externally controlled trial. *Clin Infect Dis* 44:2–12
 63. Hatipoglu N, Hatipoglu H (2013) Combination antifungal therapy for invasive fungal infections in children and adults. *Expert Rev Anti Infect Ther* 11:523–535
 64. Marr KA, Schlamm HT, Herbrecht R et al (2015) Combination antifungal therapy for invasive aspergillosis: a randomized trial. *Ann Intern Med* 162:81–89
 65. Martín-Peña A, Aguilar-Guisado M, Espigado I, Cisneros JM (2014) Antifungal combination therapy for invasive aspergillosis. *Clin Infect Dis* 59(10):1437–1445
 66. Verweij PE, Ananda-Rajahb M, Andes D, Arendrup MC, Brüggemann RJ, Chowdhary A et al (2015) International expert opinion on the management of infection caused by azole-resistant *Aspergillus fumigatus*. *Drug Resist Updates* 21–22:30–40
 67. Denning D, Cadranel J, Beigelman-Aubry C, Ader F, Chakrabarti A, Blot S, Ullman A, Dimopoulos G, Lange C, on behalf of the ESCIM and ERS (2016) Chronic pulmonary aspergillosis rationale and clinical guidelines for diagnosis and management. *Eur Respir J* 47(1):45–68
 68. Tissot F, Lamothe F, Hauser PM, Orasch C, Fluckiger U, Siegemund M et al (2013) Beta-glucan antigenemia anticipates diagnosis of blood culture-negative intraabdominal candidiasis. *Am J Respir Crit Care Med* 188(9):1100–1109
 69. Posteraro B, De Pascale G, Tumbarello M, Torelli R, Pennisi MA, Bello G et al (2011) Early diagnosis of candidemia in intensive care unit patients with sepsis: a prospective comparison of (1 to >3)-beta-D-glucan assay, *Candida* score, and colonization index. *Crit Care* 15(5):R249
 70. Angebault C, Lanternier F, Dalle F, Schrimpf C, Roupie AL, Dupuis A, Agathine A, Scemla A, Paubelle E, Caillot D, Neven B, Frange P, Suarez F, d'Enfert C, Lortholary O, Bougnoux ME (2016) Prospective evaluation of serum β -glucan testing in patients with probable or proven fungal diseases. *Open Forum Infect Dis* 16 3(3):ofw128. doi:10.1093/ofid/ofw128
 71. Avni T, Leibovici L, Paul M (2011) PCR diagnosis of invasive candidiasis: systematic review and meta-analysis. *J Clin Microbiol* 49(2):665–670
 72. Nguyen MH, Wissel MC, Shields RK, Salomoni MA, Hao B, Press EG et al (2012) Performance of *Candida* real-time polymerase chain reaction,

-
- beta-D-glucan assay, and blood cultures in the diagnosis of invasive candidiasis. *Clin Infect Dis* 54(9):1240–1248
73. Mylonakis E, Clancy CJ, Ostrosky-Zeichner L, Garey KW, Alangaden GJ, Vazquez JA et al (2015) T2 magnetic resonance assay for the rapid diagnosis of candidemia in whole blood: a clinical trial. *Clin Infect Dis* 60(6):892–899
74. Vincent JL, Brealey D, Libert N, Abidi NE, O'Dwyer M, Zacharowski K et al (2015) Rapid diagnosis of infection in the critically ill, a multicenter study of molecular detection in bloodstream infections, pneumonia, and sterile site infections. *Crit Care Med* 43(11):2283–2291
75. Metzgar D, Frinder MW, Rothman RE, Peterson S, Carroll KC, Zhang SX et al (2016) The IRIDICA BAC BSI assay: rapid, sensitive and culture-independent identification of bacteria and *Candida* in blood. *PLoS One* 11(7):e0158186
76. Rodríguez-Sánchez B, Sánchez-Carrillo C, Ruiz A, Marín M, Cercenado E, Rodríguez-Crèixems M, Bouza E (2014) Direct identification of pathogens from positive blood cultures using matrix-assisted laser desorption-ionization time-of-flight mass spectrometry. *Clin Microbiol Infect* 20:O421–O427
77. Idelevich EA, Grünastel B, Becker K (2016) Rapid detection and identification of candidemia by direct blood culturing on solid medium using lysis-centrifugation method combined with MALDI-TOF MS. *J Clin Microbiol* 55(1):97–100
78. Da Silva RM Jr, Da Silva Neto JR, Santos CS, Frickmann H, Poppert S, Cruz KS, Koshikene D, De Souza JV (2015) Evaluation of fluorescence in situ hybridisation (FISH) for the detection of fungi directly from blood cultures and cerebrospinal fluid from patients with suspected invasive mycoses. *Ann Clin Microbiol Antimicrob* 14:6
79. Mylonakis E, Clancy CJ, Ostrosky-Zeichner L, Garey KW, Alangaden GJ, Vazquez JA, Groeger JS, Judson MA, Vinagre YM, Heard SO, Zervou FN, Zacharioudakis IM, Kontoyiannis DP, Pappas PG (2015) T2 magnetic resonance assay for the rapid diagnosis of candidemia in whole blood: a clinical trial. *Clin Infect Dis* 60:892–899
80. Sinnollareddy MG, Roberts JA, Lipman J, Akova M, Bassetti M, De Waele JJ, Kaukonen KM, Koulenti D, Martin C, Montravers P, Rello J, Rhodes A, Starr T, Wallis SC, Dimopoulos G, DALI Study authors (2015) Pharmacokinetic variability and exposures of fluconazole, anidulafungin, and caspofungin in intensive care unit patients: data from multinational Defining Antibiotic Levels in Intensive care unit (DALI) patients study. *Crit Care* 19:33
81. Lin CY, Liu WL, Chang CC, Chang HT, Hu HC, Kao KC, Chen NH, Chen YJ, Yang CT, Huang CC, Dimopoulos G (2017). Invasive fungal tracheobronchitis in mechanically ventilated critically ill patients: underlying conditions, diagnosis, and outcomes. *Ann Intensive Care* 7(1):9. doi:10.1186/s13613-016-0230-9
82. Kollef M, Micek S, Hampton N, Doherty JA, Kumar A (2012) Septic shock attributed to *Candida* infection: importance of empiric therapy and source control. *Clin Infect Dis* 54(1):1739–1746
83. Eschenauer GA, Carver PL, Lin SW, Klinker KP, Chen YC, Potoski BA, Shields RK, Clancy CJ, Nguyen MH, Lam SW (2013) Fluconazole versus an echinocandin for *Candida glabrata* fungaemia: a retrospective cohort study. *J Antimicrob Chemother* 68:922–926
84. Bassetti M, Marchetti M, Chakrabarti A, Colizza S, Garnacho-Montero J, Kett DH, Munoz P, Cristini F, Andoniadou A, Viale P, Rocca GD, Roilides E, Sganga G, Walsh TJ, Tascini C, Tumbarello M, Menichetti F, Righi E, Eckmann C, Viscoli C, Shorr AF, Leroy O, Petrikos G, De Rosa FG (2013) A research agenda on the management of intra-abdominal candidiasis: results from a consensus of multinational experts. *Intensive Care Med* 39(12):2092–2106
85. Plantinga TS, Johnson MD, Scott WK, van de Vosse E, Velez Edwards DR, Smith PB, Alexander BD, Yang JC, Kremer D, Laird GM, Oosting M, Joosten LA, van der Meer JW, van Dissel JT, Walsh TJ, Perfect JR, Kullberg BJ, Netea MG (2012) Toll-like receptor 1 polymorphisms increase susceptibility to candidemia. *J Infect Dis* 205:934–943
86. Kumar V, Cheng SC, Johnson MD, Smeekens SP, Wojtowicz A, Giamarellos-Bourboulis E, Karjalainen J, Franke L, Withoff S, Plantinga TS, van de Veerdonk FL, van der Meer JW, Joosten LA, Sokol H, Bauer H, Herrmann BG, Bochud PY, Marchetti O, Perfect JR, Xavier RJ, Kullberg BJ, Wijmenga C, Netea MG (2014) Immunochip SNP array identifies novel genetic variants conferring susceptibility to candidaemia. *Nat Commun* 5:4675
87. Kullberg BJ, van de Veerdonk F, Netea MG (2014) Immunotherapy: a potential adjunctive treatment for fungal infection. *Curr Opin Infect Dis* 27(6):511–516
88. Boff C, Zoppas BC, Aquino VR, Kuplich NM, Miron D, Pasqualotto AC (2013) The indoor air as a potential determinant of the frequency of invasive aspergillosis in the intensive care. *Mycoses* 56(5):527–531