



ORIGINAL ARTICLE

## Ultrasound stroke volume variation induced by passive leg raising and fluid responsiveness: An observational cohort study

A. Trifi<sup>a,b,\*</sup>, S. Abdellatif<sup>a,b</sup>, F. Daly<sup>a,b</sup>, R. Nasri<sup>a,b</sup>, Y. Touil<sup>a,b</sup>, S. Ben Lakhel<sup>a,b</sup>

<sup>a</sup> Medical Intensive Care Unit, University Hospital Center La Rabta, Tunis, Tunisia

<sup>b</sup> Faculty of Medicine, University Tunis El Manar, Tunis, Tunisia

Received 13 June 2017; accepted 11 November 2017

### KEYWORDS

Stroke volume;  
Passive leg raising;  
Volume expansion;  
Echocardiography;  
Fluid responsiveness

### Abstract

**Objective:** To assess the performance of the ultrasound measurement of stroke volume (SV) coupled to passive leg raising (PLR) in predicting fluid responsiveness (FR).

**Design:** A prospective cohort study was carried out in patients requiring volume expansion (VE). A transthoracic Doppler echocardiography (TTE) device was used for the measurement of SV. Four measurements were obtained: before and 90 s after PLR, and before and after VE. The patients were subsequently classified according to their hemodynamic response to VE. Responders were defined by an increase in SV of at least 15% in response to VE.

**Results:** Thirty maneuvers were studied. An increase in SV > 15% in response to PLR was recorded in 21 cases. Hemodynamic indices taken in the first stage showed significant differences in the distensibility index of the inferior vena cava (dIVC), in the velocity-time integral of aortic blood flow (VTIAo) and in SV, with respective *p*-values of 0.009, 0.012 and 0.025. The SV changes induced by VE were significantly correlated to the SV changes induced by PLR, with a Spearman coefficient of 0.77 and a linear equation  $y = 0.82x + 1.68$ . Fluid responsiveness can be efficiently predicted by assessing the effects of PLR on SV monitored by Doppler TTE, with a sensitivity of 94.7% and a negative predictive value of 88%.

**Abbreviations:** VE, volume expansion; SV, stroke volume; FR, fluid responsiveness; PLR, passive leg raising; ICU, intensive care unit; CO, cardiac output; EE, transthoracic echocardiography; MAP, mean arterial pressure; VTIAo, velocity-time integral of aortic blood flow; LVEF, left ventricular ejection fraction; IVC, inferior vena cava; dIVC, distensibility index of IVC; ROC, receiver operating characteristic; IQR, interquartile range; SAPS, Simplified Acute Physiology Score; SOFA, Sequential Organ Failure Assessment Score; PEEP, positive end-expiratory pressure; HR, heart rate; cIVC, collapsibility index of IVC; SBP, spontaneously breathing patients; AUC, area under the curve; CVP, central venous pressure, pulmonary artery occlusion pressure; EVLA, extravascular lung water; PAC, pulmonary artery catheter; PPV, positive predictive value; NPV, negative predictive value.

\* Corresponding author.

E-mail address: [ahlem.ahurabta@gmail.com](mailto:ahlem.ahurabta@gmail.com) (A. Trifi).

<https://doi.org/10.1016/j.medin.2017.11.002>

0210-5691/© 2017 Elsevier España, S.L.U. y SEMICYUC. All rights reserved.

Please cite this article in press as: Trifi A, et al. Ultrasound stroke volume variation induced by passive leg raising and fluid responsiveness: An observational cohort study. Med Intensiva. 2017. <https://doi.org/10.1016/j.medin.2017.11.002>

## PALABRAS CLAVE

Volumen sistólico;  
Elevación pasiva de  
las piernas;  
Expansión  
volumétrica;  
Ecocardiografía;  
Capacidad de  
respuesta

**Conclusion:** Our data support the interest of Doppler TTE as an effective tool in predicting FR through the assessment of SV in response to PLR, in hemodynamically unstable patients.  
© 2017 Elsevier España, S.L.U. y SEMICYUC. All rights reserved.

## Variación ultrasónica del volumen sistólico inducida por la elevación pasiva de la pierna y la respuesta de fluidos: estudio de cohortes observacional

### Resumen

**Objetivo:** Evaluar el rendimiento de la medida del volumen sistólico (VS) por ultrasonido junto con la elevación pasiva de piernas (EPP) para predecir la respuesta de fluidos (RF).

**Diseño:** Estudio prospectivo de cohorte realizado en pacientes que requieren expansión de volumen (EV). Se utilizó un dispositivo doppler ecocardiográfico transtorácico (ETT) para la medición del VS. Se obtuvieron 4 mediciones: antes y 90 s después de la EPP, y antes y después de la EV. Posteriormente, los pacientes se clasificaron según su respuesta hemodinámica a VE. Los respondedores se definieron por un aumento del VS de al menos 15% en respuesta a EV.

**Resultados:** Se estudiaron 30 maniobras. Un aumento del VS > 15% en respuesta a la EPP se informó en 21 casos. Los índices hemodinámicos tomados en la primera etapa mostraron diferencias significativas en el índice de distensibilidad de la vena cava inferior (dVCI), en la integral velocidad-tiempo del flujo sanguíneo aórtico (IVTAo) y en el VS con valores p respectivos en 0,009, 0,012 y 0,025. Los cambios del VS inducidos por EV se correlacionaron significativamente con los cambios del VS inducidos por EPP con un coeficiente de Spearman en 0,77 y una ecuación lineal en  $y = 0,82 \times + 1,68$ . La respuesta de fluidos se puede predecir eficazmente mediante la evaluación de los efectos de EPP en el VS vigilado por ETT-doppler con sensibilidad en el 94,7% y VPN en el 88%.

**Conclusión:** Nuestros datos respaldan el interés del ETT-doppler como una herramienta eficaz en la predicción de la RF por la evaluación del VS en respuesta a la EPP en pacientes hemodinámicamente inestables.

© 2017 Elsevier España, S.L.U. y SEMICYUC. Todos los derechos reservados.

## Introduction

In critically ill patients at risk for organ failure, the administration of intravenous fluids has equal chances of resulting in benefit or harm. Hence, the assessment of the preload status is a paramount step before any volume expansion (VE) in order to determine in which portion of the Starling curve is located the patient. When the heart is operating on the steep portion of the curve, stroke volume (SV) increases substantially when preload increases with intravenous fluids, which means administration of fluids improves cardiac output and oxygen delivery. In contrast, when the heart is operating on the flat portion of the curve, further increasing preload with intravenous fluids will not substantially increase SV.<sup>1,2</sup> Indeed, large volume fluid resuscitation may contribute to endothelial injury and lead to interstitial edema and organ dysfunction, prolonger mechanical ventilation times, and contribute to the development of intra-abdominal hypertension.<sup>3-5</sup>

It is now recognized that the static preload indices have a moderate interest in fluid responsiveness (FR) prediction and dynamic techniques need to be applied. Changes in stroke volume in response to intravenous fluids are best determined by dynamic indexes. Passive leg raising (PLR) remains one of the most versatile and reversible techniques to assess fluid

needs in intensive care unit (ICU) patients.<sup>6,7</sup> This procedure rapidly returns 200–300 ml of blood from the veins of the lower extremities to the central circulation.<sup>7</sup> As a result of increased ventricular preload, the stroke volume (SV); and therefore the cardiac output (CO); is augmented according to the degree of preload reserve. And it rapidly reversed when the legs are returned to a horizontal position.

Transthoracic echocardiography (TTE) is increasingly used for non-invasive hemodynamic assessment of critically ill patients since high-quality images and Doppler signals are obtained with recent TTE equipment.<sup>8</sup> The response of the descending aortic blood flow to passive leg raising (PLR) has been proposed to predict volume responsiveness.<sup>9</sup>

The aim of our study was to assess the performance of the ultrasound measurement of the SV coupled with PLR to predict FR in the ICU patients.

## Patients and methods

### Scope

This study was conducted at the Multipurpose Medical intensive care unit of La Rabta University Hospital. Our unit consists of 8 ICU beds and receives medical pathologies

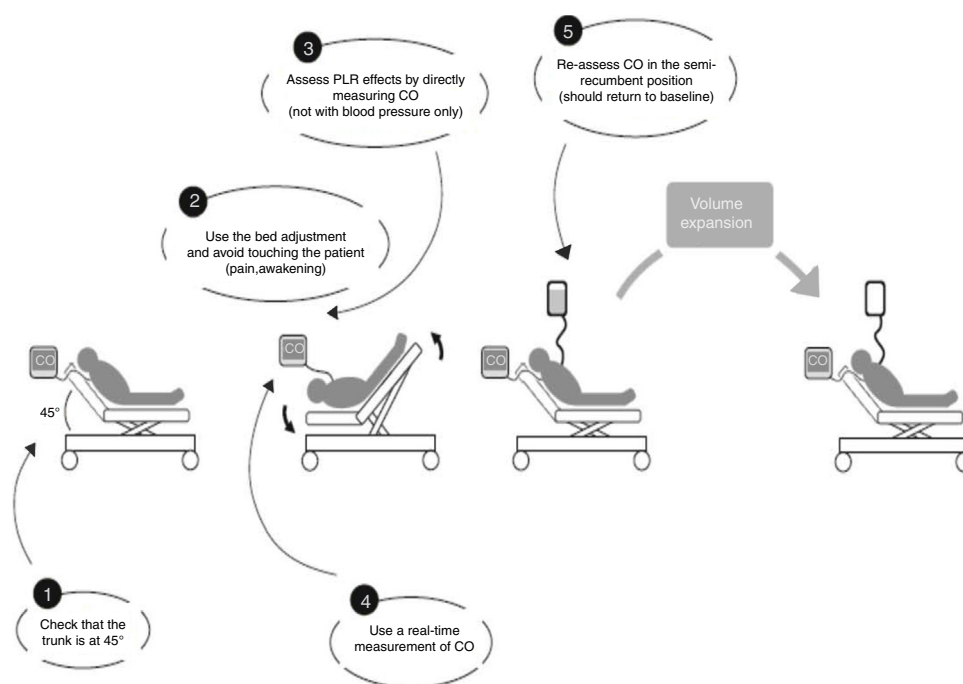


Figure 1 Used method for passive leg raising as described by Monnet et al.<sup>7</sup>

of all types (hemodynamic, respiratory, neurological and metabolic). The traumatic-surgical pathologies do not enter in our activity.

## Study design

This was designed as an observational prospective cohort study, over a period of four months (from January 2017 to April 2017). The study was approved by the Ethics Committee of the institutional review board of La Rabta hospital. As the protocol was considered part of routine practice, informed consent was waived following the recommendations of the Ethical Committee. Patients or their legal relatives were informed by the participation in this study.

## Patients

Patients were enrolled from the medical ICU and any patient requiring VE as determined by the ICU attending physician was eligible for enrolment. No specific criteria for circulatory insufficiency were required for study entry. The decision of the ICU attending to administer fluid was based on clinical signs of inadequate global perfusion: mean arterial pressure (MAP) below 60 mmHg, oliguria (urine output less than 0.5 ml/kg per hour for more than 2 h), cold extremities, mottled skin, and tachycardia [heart rate (HR) higher than 100/min]. Exclusion criteria were known aortic valve disease, known ascending aortic aneurysm, contraindication to PLR for any reason, and poor cardiac echogenicity.

## Protocol and echocardiographic measurements

The echocardiographic examination was performed by the same operator (AT) following training on the device and

using a transthoracic ultrasound device (Hitachi Aloka – ARIETTA V60), equipped with the tissue Doppler imaging program and a phased array transducer C251 Convex 5-1 Mhz. Conventional echocardiography including M-mode, two-dimensional, and Doppler measurements was performed. Echocardiographic images were recorded together with the electrocardiogram. The device used directly measures the blood flow through the aortic valve.

For each patient studied, echocardiographic measurements were taken in four stages. In stage one the patient was placed in a semi-recumbent position with the head elevated at 45 degrees. In stage two, the patient was positioned supine with the legs straight and elevated at 45 degrees for 90 s. The highest plateau value of velocity-time integral of aortic blood flow (VTIAo) recorded during PLR was obtained within the first 90 s following leg elevation. Stage three readings were taken 2 min after the patient was returned to the baseline position, and stage four immediately following expansion of 500 ml of crystalloids over 15 min. The different stages of passive leg raising as well as the volume expansion were in accordance with the method described by Monnet et al.<sup>7</sup> (Fig. 1). Vasopressors and ventilator settings were not changed at any time while a patient was being studied.

The stroke volume was calculated as the product of the VTIAo by the aortic valve area. Using the apical five-chamber view the VTIAo was computed from the area under the envelope of the continued-wave doppler signal obtained at the level of the aortic annulus. The VTIAo value was averaged over five consecutive measurements in sinus rhythm patients and over ten measurements in patients with atrial fibrillation. Using the parasternal long axis view the diameter of the aortic orifice was measured at the insertion of the aortic cusp and the aortic valve area was calculated [ $\pi \times (\text{Diameter}/2)^2$ ]. As the diameter of the aortic orifice is

assumed to remain constant in a given patient, the diameter was measured once at baseline. The cardiac output was calculated as the product of stroke volume by the heart rate. Thereafter, the studied patients were classified according to their responsiveness to the endogenous (by PLR) and/or exogenous (by VE). Likewise, the left ventricular ejection fraction (LVEF) was measured by the technique of Teicholz in the large-axis parasternal view or Simpson on the 4-cavity view (in the presence of segmental kinetics disorders). Also, the inferior vena cava (IVC) diameter was examined within 0.5–3 cm from the caval–right atrial junction in the sub-costal view and the distensibility index (dIVC) was calculated as the ratio of  $(D_{max} - D_{min})/D_{min}$ .

### Definition of volume responsiveness

Patients were classified according to their hemodynamic response to VE. Responders had a SV increment of at least 15% in response to VE (an increase in SV from stage one to stage four), while non-responders had a SV increase of less than 15%. Cut-off values of 15% have been previously used as a significant difference between two measures of CO in similar studies.<sup>10–13</sup> Indeed, this value is considered as the cut-off that predict volume responsiveness in the recent revision on echocardiography in shock management.<sup>8</sup>

### Statistical analysis

Continuous data are expressed as mean ± standard deviation or median [interquartile range 25th–75th percentile (p25–p75)] as appropriate. Hemodynamic variables were compared between responders and non-responders using the nonparametric Mann–Whitney test. The Kruskal–Wallis test was used to test differences between 3 subgroups. The quantitative variables before/after PLR and before/after EV were compared using the non parametric Wilcoxon test for paired series. The area under receiver operating characteristic (ROC) curve was used to measure the predictive values of ultrasound variation of SV after PLR and VE and expressed as the area ± standard error. The Spearman test was used to assess the correlation between the SV variations (before/after PLR and before/after VE). Differences with a *p* value less than 0.05 were considered statistically significant.

Statistical analyses were performed using the SPSS© version 20 software package.

## Results

### Patient characteristics

Twenty-eight patients were examined and 26 were studied. Two patients had to be excluded because of satisfactory doppler signals could not be obtained. Thus, a total of 30 volume challenges in 26 consecutive patients were evaluated. Three patients had more than one study. Repeat studies performed on the same patient were separated in time by at least 24 h. The indications of a volume expansion were: septic shock in 21 cases, sepsis without shock:

Table 1 Patient characteristics.

Characteristics	Patients (n = 26)
Age (years), median (p25–p75)	48 (44–56)
SAPS II, median (p25–p75)	32 (28–46)
SOFA, median (p25–p75)	5 (3–8)
Body surface area (m <sup>2</sup> ), median (p25–p75)	1.84 (1.62–2.06)
Underlying diseases, n (%)	
Cardiac failure	2 (8%)
Respiratory failure	2 (8%)
Hypertension	4 (16%)
Diabetes	4 (16%)
Renal failure	7 (27%)
Reason for admission, n (%)	
Acute respiratory failure	11 (42%)
Septic shock	10 (39%)
Coma	4 (16%)
Ketoacidosis	1 (3%)
Etiology of circulatory insufficiency (total cases = 30)	
Hypovolemia of septic origin: n/30 (%)	25/30 (83%)
Hypovolemia of non-septic origin, n/30 (%)	5/30 (17%)
Vasopressive agents, n (%)	
Norepinephrine	12 (46%)
Epinephrine	1 (3%)
Respiratory support (%)	
Oxygenotherapy	5 (20%)
Mechanical ventilation: ventilator settings:	
Tidal volume (ml/kg)	6.7 (6–8.2)
PEEP (cm H <sub>2</sub> O)	7 (5–10)

SAPS, Simplified Acute Physiology Score; SOFA, Sequential Organ Failure Assessment Score; PEEP, positive end-expiratory pressure.

4 cases, metabolic complications of diabetes (ketoacidosis: 1 case and hyperosmolar state occurred during hospitalization: 2 cases), dehydration with deglobulisation following accidental arterial puncture: 1 case (the time waiting blood transfusion) and pancreatitis with a 3rd sector: 1 case. The clinical characteristics are reported in Table 1.

### Assessment of parameters at baseline (stage 1)

The initial hemodynamic measurements are summarized in Table 2. The responders had a significantly lower initial VTIAo and SV compared with the non-responders ( $23 \pm 5.5$  vs  $29 \pm 4$  cm,  $p = 0.012$  and  $66 \pm 18$  vs  $89 \pm 35$  ml,  $p = 0.025$ ). Likewise, the distensibility index of inferior vena cava (dIVC) was higher in responders group (42% vs 18.8%,  $p = 0.009$ ).

Although the MAP ( $68 \pm 13$  vs  $75.05 \pm 14$  mmHg,  $p = 0.09$ ), the CO ( $6.3 \pm 2.3$  vs  $7.32 \pm 2.39$  L/min,  $p = 0.35$ ) and the cardiac index (CI) ( $3.45 \pm 1.2$  vs  $3.96 \pm 1.46$  L/min/m<sup>2</sup>,  $p = 0.3$ ) were not different between the groups.

**Table 2** Initial hemodynamic parameters taken in stage one.

Parameters	All patients (n=30)	Responders (n=21)	Non-responders (n=9)	p value
HR (beats/min), mean (SD)	91 ± 24	95 ± 24	84 ± 15	0.18
MAP (mmHg), mean (SD)	72 ± 20	68 ± 13	75.05 ± 14	0.09
LVEF (%)	55.8	56.2	55.4	0.77
dIVC (%) in ventilated patients	30	42	18.8	0.009
cIVC (%) in SBP	36.4	41	33	0.6
VTIAo (cm), mean (SD)	25 ± 5	23 ± 5.5	29 ± 4	0.012
SV (ml), mean (SD)	73 ± 26	66 ± 18	89 ± 35	0.025
CO (L/min), mean (SD)	6.6 ± 2.5	6.3 ± 2.3	7.32 ± 2.39	0.35
CI (L/min/m <sup>2</sup> ), mean (SD)	3.6 ± 1.2	3.45 ± 1.2	3.96 ± 1.46	0.3

HR, heart rate; SD, standard deviation; MAP, Mean arterial pressure (mmHg); LVEF, left ventricular ejection fraction; dIVC, distensibility index of inferior vena cava; cIVC, collapsibility index of IVC; SBP, Spontaneously Breathing Patients; VTIAo, velocity-time integral of aortic blood flow; SV, stroke volume; CO, cardiac output; CI: cardiac index.

**Table 3** Hemodynamic parameters taken throughout the four stages of measurement (results expressed in mean ± SD).

	Before PLR	After PLR		Before VE	After VE
<i>HR (beats/min)</i>			<i>HR (beats/min)</i>		
Responders (n=21)	95.3 ± 24	95.7 ± 24	Responders (n=19)	93 ± 26	93 ± 25
N. responders (n=9)	83 ± 20	86 ± 9	N. responders (n=11)	88 ± 16	87 ± 19
<i>MAP (mmHg)</i>			<i>MAP (mmHg)</i>		
Responders (n=21)	75 ± 16	84 ± 25	Responders (n=19)	77 ± 14	83 ± 14
N. responders (n=9)	78 ± 13	83 ± 18	N. responders (n=11)	91 ± 24	92 ± 12
<i>VTI Ao (cm)</i>			<i>VTI Ao (cm)</i>		
Responders (n=21)	23 ± 5.5	29 ± 6.1 <sup>*0.004</sup>	Responders (n=19)	26 ± 5.6	31 ± 7 <sup>*0.019</sup>
N. responders (n=9)	29 ± 4	31 ± 4	N. responders (n=11)	27 ± 5	30 ± 5
<i>SV (ml)</i>			<i>SV (ml)</i>		
Responders (n=21)	66 ± 18	86 ± 17 <sup>*0.001</sup>	Responders (n=19)	78 ± 27	92 ± 21 <sup>**0.06</sup>
N. responders (n=9)	89 ± 35	94 ± 30	N. responders (n=11)	79 ± 17	85 ± 18
<i>CO (L/mn)</i>			<i>CO (L/mn)</i>		
Responders (n=21)	6.3 ± 2.3	7.6 ± 2.9 <sup>*0.04</sup>	Responders (n=19)	7.1 ± 2.7	8.6 ± 3.4 <sup>**0.07</sup>
N. responders (n=9)	7.3 ± 2.9	7.9 ± 5	N. responders (n=11)	7.02 ± 2.1	7.4 ± 2.4
<i>CI (L/mn/m<sup>2</sup>)</i>			<i>CI (L/mn/m<sup>2</sup>)</i>		
Responders (n=21)	3.45 ± 1.2	4.32 ± 1.57 <sup>&lt;0.0001</sup>	Responders (n=19)	3.86 ± 1.53	4.72 ± 1.95 <sup>&lt;0.0001</sup>
N. responders (n=9)	3.96 ± 1.46	4.27 ± 1.32	N. responders (n=11)	3.84 ± 1.21	4.09 ± 1.32

PLR, passive leg raising; VE, volume expansion; HR, heart rate; MAP, mean arterial pressure; VTIAo, velocity-time integral of aortic blood flow; SV, stroke volume; CO, cardiac output; CI: cardiac index.

\* Significant change.

\*\* Near to significance.

## Effects of PLR and volume expansion

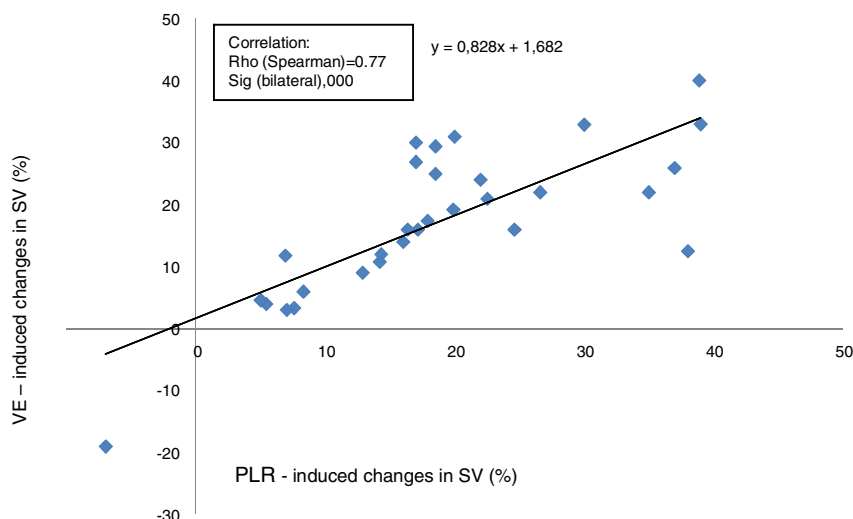
The hemodynamic readings taken throughout the four stages of measurements are summarized in [Table 3](#).

During the first step (PLR): there were 21 responders and 9 non-responders. For the responders (n=21), PLR induced a significant increase in VTI Ao (23 ± 5.5 cm vs 29 ± 6.1, p=0.004), in SV (66 ± 18 ml vs 86 ± 17 ml, p=0.001), in CO (6.3 ± 2.3 L/min vs 7.6 ± 2.9 L/min, p=0.04) and in CI (3.45 ± 1.2 L/min/m<sup>2</sup> vs 4.32 ± 1.57 L/min/m<sup>2</sup>, p<0.0001). Although, the heart rate and the MAP were unchanged after PLR in this same group (95.3 ± 24 beats/min vs 95.7 ± 24 beats/min, p=0.74) and (75 ± 16 mmHg vs

84 ± 25 mmHg, p=0.17) respectively. In the non-responders (n=9), PLR did not induce a significant change in any of the hemodynamic values measured.

During the second step (VE): there were 19 responders and 11 non-responders. For the responders group (n=19), VE induced a significant increase in VTI Ao (26 ± 5.6 cm vs 31 ± 7, p=0.019) and in CI (3.86 ± 1.53 L/min/m<sup>2</sup> vs 4.72 ± 1.95 L/min/m<sup>2</sup>, p=0.001). No significant increase in SV (78 ± 27 ml vs 92 ± 21 ml, p=0.06) nor in CO (7.1 ± 2.7 L/min vs 8.6 ± 3.4 L/min, p=0.07) was revealed. Any changes were showed with HR and MAP. For the non-responders, all the parameters were unchanged before or after VE ([Table 3](#)).





**Figure 2** Relationship between proportional changes in SV induced by VE and proportional changes in SV induced by PLR. SV, stroke volume; PLR, passive leg raising; VE, volume expansion.

### Relationship between changes in SV induced by PLR and VE

The proportional changes in SV induced by VE were correlated positively with the proportional changes in SV induced by PLR (Rho score = 0.77,  $p < 0.0001$ ), with a linear correlation equation calculated at  $y = 0.82x + 1.68$  (Fig. 2).

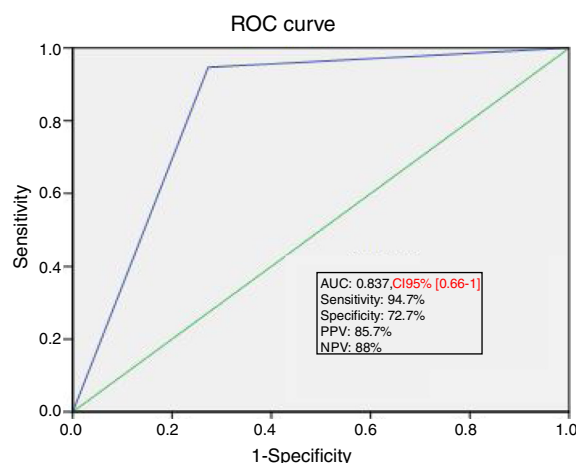
A correlation study between the SV variations induced by PLR and SV variations induced by VE was performed separately: in ventilated patients ( $n = 23$ ) versus in SBP ( $n = 7$ ). Correlation was found to be better in ventilated patients (Spearman coefficient: 0.836 and  $p < 0.0001$  versus 0.75 and  $p = 0.052$ ).

### Ability of PLR maneuver to predict fluid responsiveness

The area under the ROC curve for the percent change in SV during PLR predicting a response to VE was  $0.84 \pm 0.04$ . A SV increase induced by PLR of 15% or more predicted volume response with a sensitivity of 94.7%, specificity of 72.7%, positive predictive value of 85.7%, and a negative predictive value of 88% (Fig. 3).

### Discussion

Our study, in a relatively unselected population of medical ICU patients, demonstrates that non-invasive ultrasonic SV measurement coupled to PLR can predict the hemodynamic response to VE. The initial VTIAo and SV were significantly lower in responders. Of the same order, the distensibility index of IVC was widely upper than 15% and significantly higher in responders. In the responders group: VTIAo, SV and CO were significantly improved by the PLR maneuver. The same effect was observed in these later hemodynamic parameters after VE. The change in SV following VE correlated positively with changes in SV during PLR. Finally, an increase in SV induced by PLR with a cut-off of 15% had a



**Figure 3** ROC curve showing the ability of PLR induced changes in SV of at least 15% to predict fluid responsiveness. ROC, receiver operating characteristics; PLR, passive leg raising; SV, stroke volume; AUC, area under the curve; PPV, positive predictive value; NPV, negative predictive value.

significant ability for predicting response to fluid loading with a sensitivity of 94.7%, specificity of 72.7%, PPV of 85.7%, and NPV of 88%.

Evaluation and management of intravascular volume are a central challenge in caring for the critically ill patients. On the one hand, hemodynamically unstable patients, often require a volume expansion, in keeping with recommendations for treatment of many shock states.<sup>14</sup> On the other hand, fluid overload may adversely affect the hemodynamic status. The static measures such as central venous pressure (CVP), pulmonary artery occlusion pressure (PAOP) and extravascular lung water (EVLW) were the first indices developed to assist with predicting volume responsiveness. While they reflect a patient's preload at some point on the Frank-Starling curve, it cannot demonstrate whether there is capacity to advance along the curve and optimize myocardial filament overlap.<sup>15</sup>

The changes in preload indices induced by intrathoracic pressure changes during mechanical ventilation were successfully assessed as predictors of volume responsiveness.<sup>15</sup> Among the indices assessing the relationship between heart/lung interaction and fluid responsiveness, the changes in inferior vena cava diameter expressed as distensibility index of inferior vena cava (dIVC). The accuracy of dIVC in predicting fluid responsiveness has been proved among ventilated patients.<sup>16,17</sup> While, in spontaneously breathing patients, the collapsibility of the IVC was assessed with favorable results.<sup>18,19</sup> In our series, the dIVC in ventilated patients had higher accuracy than c IVC in unventilated patients for evaluating fluid responsiveness.

As underlined by several authors, dynamic criteria are better predictors of volume responsiveness than static criteria.<sup>20-22</sup> In this way, PLR, which is a simple, dynamic and reversible maneuver, has been proposed by Boulain et al.<sup>23</sup> to predict fluid responsiveness in mechanically ventilated patients. A strong correlation between SV variations induced by PLR and by VE, measured by TTE analysis of aortic blood flow, was previously reported by Lamia et al.<sup>24</sup> and sustained by our results. Among several TTE markers assessed in this latter study, the SV variation induced by PLR was the better predictor of fluid responsiveness.<sup>24</sup> Other studies in medical or surgical ICUs showed good sensitivity (77–100%) and specificity (88–99%) using a threshold of 10–15% increment of SV or CO.<sup>12,24-28</sup>

Our findings further suggest that the accuracy of this dynamic tool in predicting FR had higher accuracy for evaluating fluid responsiveness in ventilated patients than unventilated.

Our sensitivity (94.7%) is comparable with these studies, but our specificity (72.7%) is somewhat lower. Our high sensitivity with a good NPV allows us to assert that this test of SV increase by PLR is useful to exclude a benefit from fluid responsiveness when the SV increase is less than 15%. Our lower specificity may be the result of inclusion of patients regardless of underlying co-morbidities, mainly the cardiac and renal failure. As well as the respiratory support including ventilator setting variations (tidal volume: 6–8 ml/kg and PEEP: 5–10 cm H<sub>2</sub>O) may influence the effect of PLR in SV.<sup>24</sup>

Anyway, the analysis of aortic blood flow using TTE in order to evaluate change in SV or CO in response to PLR maneuver grow to be an inevitable practice in ICU patients. A panel of experts [from the Spanish Society of Intensive and Critical Care Medicine and Coronary Units (SEMICYUC)] worked for the standardization of the Intensive Care Medicine and elaborated a several recommendations, in order to improve the management of critically ill patient.<sup>29</sup> For the hemodynamic monitoring, ultrasound was considered as a tool to improve patient care quality and safety.<sup>29</sup> Indeed, ultrasound monitoring is useful in the diagnosis of shock, cardiorespiratory arrest or respiratory failure.<sup>29</sup> This non-invasive device allows an optimization of clinical management, evaluation of response to given therapy, avoids iatrogenic and help to select who patient requiring an invasive monitoring.<sup>29</sup>

TTE techniques appear useful also, in patients with spontaneous respiratory effort and those with arrhythmias<sup>27</sup> conversely to many of invasive monitoring techniques.<sup>30</sup> In addition, much of the data derived from pulmonary artery

catheter (PAC) can be obtained using TTE by avoiding the invasiveness and the rampant misinterpretation of data.<sup>31-33</sup>

Finally, the recent large review<sup>34</sup> (50 studies, N=2260 patients) aiming to identify predictors of fluid responsiveness in hemodynamically unstable patients showed that the most useful test was the measurement of change in CO induced by PLR with (positive LR, 11 [95% CI, 7.6–17]; negative LR, 0.13 [95% CI, 0.07–0.22]). These results were similar during controlled ventilation or spontaneous breathing (positive LR=11 [95% CI, 6.3–21] vs 7.0 [95% CI, 3.8–13.1] and negative LR=0.08 [95% CI, 0.03–0.21] vs 0.22 [95% CI, 0.09–0.54]).

The weakness of our study is the small sample size and the unselected nature of the studied population. In this way, another study is being carried out to evaluate the performance of this technique to predict fluid responsiveness in patients with spontaneous breathing and with underlying cardiac disease versus those mechanically ventilated. Another limitation to note is the absence of more than one explorer who performed the TTE. That leads to a lack of a critical revision by other independent explores and therefore absence of a concordance test.

## Conclusion

Our findings strengthen further the hypothesis that volume expansion can be predicted by a simple non-invasive tool (ultrasound SV coupled with PLR) in patients presumed requiring volume expansion.

## Funding

This research did not receive any specific grant from funding agencies in the public, commercial, or not-for-profit sectors.

## Authors' contributions

AT, SA and SBL designed the study. FD, RN and YT contributed to data collection. AT wrote the manuscript and performed the statistical analysis. SA and SBL participated in its critical revision. All authors read and approved the final manuscript.

## Conflict of interest

The authors declare that they have no competing interests.

## References

1. Patterson SW, Starling EH. On the mechanical factors which determine the output of the ventricles. *J Physiol.* 1914;48:357–79.
2. Berlin DA, Bakker J. Starling curves and central venous pressure. *Crit Care.* 2015;19:55.
3. Brandstrup B, Tønnesen H, Beier-Holgersen R, Hjortso E, Ørding H, Lindorff-Larsen K, et al. Effects of intravenous fluid restriction on postoperative complications: comparison of two perioperative fluid regimens. *Ann Surg.* 2003;238:641–8.
4. Upadya A, Tilluckdharry L, Muralidharan V, Amoateng-Adjepong Y, Manthous CA. Fluid balance and weaning outcomes. *Intensive Care Med.* 2005;31:1643–7.

5. Malbrain ML, Chiumello D, Pelosi P, Bihari D, Innes R, Ranieri VM, et al. Incidence and prognosis of intraabdominal hypertension in a mixed population of critically ill patients: a multi-center epidemiological study. *Crit Care Med.* 2005;33:315–22.
6. Vincent JL, Weil MH. Fluid challenge revisited. *Crit Care Med.* 2006;34:1333–7.
7. Monnet X, Teboul JL. Passive leg raising: five rules, not a drop of fluid! *Crit Care.* 2015;19:18.
8. McLean AS. Echocardiography in shock management. *Crit Care.* 2016;20:275.
9. Muller L, Toumi M, Bousquet PJ, Riu-Poulenc B, Louart G, Candela D, et al. An increase in aortic blood flow after an infusion of 100 ml colloid over 1 minute can predict fluid responsiveness. *Anesthesiology.* 2011;115:541–7.
10. Michard F, Teboul JL. Predicting fluid responsiveness in ICU patients. *Chest.* 2002;121:2000–8.
11. Monnet X, Teboul JL. Passive leg raising. *Intensive Care Med.* 2008;34:659–63.
12. Maizel J, Airapetian N, Lorne E, Tribouilloy C, Massy Z, Slama M. Diagnosis of central hypovolemia by using passive leg raising. *Intensive Care Med.* 2007;33:1133–8.
13. Stetz CW, Miller RG, Kelly GE, Raffin TA. Reliability of the thermodilution method in the determination of cardiac output in clinical practice. *Am Rev Respir Dis.* 1982;126:1001–4.
14. Dellinger RP, Levy MM, Rhodes A, Annane D, Gerlach H, Opal SM, et al. Surviving sepsis campaign: international guidelines for management of severe sepsis and septic shock: 2012. *Crit Care Med.* 2013;41:580–637.
15. Marik PE, Monnet X, Teboul JL. Hemodynamic parameters to guide fluid therapy. *Ann Intensive Care.* 2011;1:1.
16. Charbonneau H, Riu B, Faron M, Mari A, Kurrek MM, Ruiz J, et al. Predicting preload responsiveness using simultaneous recordings of inferior and superior vena cavae diameters. *Crit Care.* 2014;18:473.
17. Moretti R, Pizzi B. Inferior vena cava distensibility as a predictor of fluid responsiveness in patients with subarachnoid hemorrhage. *Neurocrit Care.* 2010;13:3–9.
18. Muller L, Bobbia X, Toumi M, Louart G, Molinari N, Ragonnet B, et al. Respiratory variations of inferior vena cava diameter to predict fluid responsiveness in spontaneously breathing patients with acute circulatory failure: need for a cautious use. *Crit Care.* 2012;16:R188.
19. Airapetian N, Maizel J, Alyamani O, Mahjoub Y, Lorne E, Levrard M, et al. Does inferior vena cava respiratory variability predict fluid responsiveness in spontaneously breathing patients? *Crit Care.* 2015;19:400.
20. Roeck M, Jakob SM, Boehlen T, Brander L, Knuesel R, Takala J. Change in stroke volume in response to fluid challenge: assessment using esophageal Doppler. *Intensive Care Med.* 2003;29:1729–35.
21. Cariou A, Monchi M, Joly LM, Bellenfant F, Claessens YE, Thébert D, et al. Noninvasive cardiac output monitoring by aortic blood flow determination: evaluation of the Sometec Dynemo-3000 system. *Crit Care Med.* 1998;26:2066–72.
22. Teboul JL. SRLF experts recommendations: indicators of volume resuscitation during circulatory failure. *Reanimation.* 2004;13:255–63.
23. Boulain T, Achard JM, Teboul JL, Richard C, Perrotin D, Ginies G, et al. Changes in BP induced by passive leg raising predict response to fluid loading in critically ill patients. *Chest.* 2002;121:1245–52.
24. Lamia B, Ochagavia A, Monnet X, Chemla D, Richard C, Teboul JL, et al. Echocardiographic prediction of volume responsiveness in critically ill patients with spontaneously breathing activity. *Intensive Care Med.* 2007;33:1125–32.
25. Preau S, Saulnier F, Dewavrin F, Durocher A, Chagnon JL. Passive leg raising is predictive of fluid responsiveness in spontaneously breathing patients with severe sepsis or acute pancreatitis. *Crit Care Med.* 2010;38:819–25.
26. Biais M, Vidil L, Sarrabay P, Cottenceau V, Revel P, Sztark F. Changes in stroke volume induced by passive leg raising in spontaneously breathing patients: comparison between echocardiography and Vigileo/FloTrac device. *Crit Care.* 2009;13:R195.
27. Thiel SW, Kollef MH, Isakow W. Non-invasive stroke volume measurement and passive leg raising predict volume responsiveness in medical ICU patients: an observational cohort study. *Crit Care.* 2009;13:R111.
28. Mandeville JC, Colebourn CL. Can transthoracic echocardiography be used to predict fluid responsiveness in the critically ill patient? A systematic review. *Crit Care Res Pract.* 2012;2012:513480.
29. Hernández-Tejedor A, Peñuelas O, Sirgo Rodríguez G, Llompарт-Pou JA, Palencia Herrejón E, Estella A, et al. Recommendations of the Working Groups from the Spanish Society of Intensive and Critical Care Medicine and Coronary Units (SEMICYUC) for the management of adult critically ill patients. *Med Intensiva.* 2017;41:285–305.
30. Michard F. Stroke volume variation: from applied physiology to improved outcomes. *Crit Care Med.* 2011;39:402–3.
31. Harvey S, Harrison DA, Singer M, Ashcroft J, Jones CM, Elbourne D, et al. Assessment of the clinical effectiveness of pulmonary artery catheters in management of patients in intensive care (PAC-Man): a randomised controlled trial. *Lancet.* 2005;366:472–7.
32. Binanay C, Califf RM, Hasselblad V, O'Connor CM, Shah MR, Sopko G, et al. Evaluation study of congestive heart failure and pulmonary artery catheterization effectiveness: the ESCAPE trial. *JAMA.* 2005;294:1625–33.
33. National Heart, Lung, and Blood Institute Acute Respiratory Distress Syndrome (ARDS) Clinical Trials Network Wheeler AP, Bernard GR, Thompson BT, Schoenfeld D, Wiedemann HP, et al. Pulmonary-artery versus central venous catheter to guide treatment of acute lung injury. *N Engl J Med.* 2006;354:2213–24.
34. Bentzer P, Griesdale DE, Boyd J, MacLean K, Sirounis D, Ayas NT. Will this hemodynamically unstable patient respond to a bolus of intravenous fluids? *JAMA.* 2016;316:1298–309.